

Anti-G6PC3 Polyclonal Antibody

Product Details

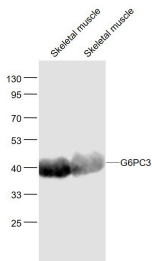
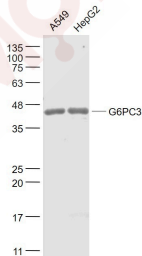
Ig Type: IgG
Reactivity: Human, Mouse, Rat (predicted: Cow, Rabbit, Sheep)
Molecular Weight: Theoretical: 39 kDa. Actual: 39 kDa.
Purification: Protein A purified

Applications

1. Sample:
A549 (Human) Cell Lysate at 30 μ g
HepG2 (Human) Cell Lysate at 30 μ g
Primary: Anti-G6PC3 (TMAB-00725) at 1/1000 dilution
Secondary: IRDye800CW Goat Anti-Rabbit IgG at 1/20000 dilution
Predicted band size: 39 kDa
Observed band size: 39 kDa

2. Sample:
Skeletal muscle (Mouse) Lysate at 40 μ g
Skeletal muscle (Rat) Lysate at 40 μ g
Primary: Anti-G6PC3 (TMAB-00725) at 1/1000 dilution
Secondary: IRDye800CW Goat Anti-Rabbit IgG at 1/20000 dilution
Predicted band size: 39 kDa
Observed band size: 39 kDa

Verified Activity:



Application: WB
Recommended WB: 1:500-2000

Properties

Stability & Storage: Store at -20°C or -80°C for 12 months. Avoid repeated freeze-thaw cycles.

Shipping: Shipping with blue ice.

Antigen Details

Immunogen: KLH conjugated synthetic peptide: human G6PC3

Antigen Species: Human

Gene ID: 92579

Uniprot ID: Q9BUM1

Synonyms: Ubiquitous glucose-6-phosphatase catalytic subunit-related protein; Glucose 6 phosphatase, catalytic, 3; UGRP; G-6-Pase 3; G6Pase-beta; SCN4; Glucose-6-phosphatase 3; Glucose-6-phosphatase beta; G6Pase 3

Biology Area: Cellular metabolism, Energy Metabolism

Research Background

This gene encodes the catalytic subunit of glucose-6-phosphatase (G6Pase). G6Pase is located in the endoplasmic reticulum (ER) and catalyzes the hydrolysis of glucose-6-phosphate to glucose and phosphate in the last step of the gluconeogenic and glycogenolytic pathways. Mutations in this gene result in autosomal recessive severe congenital neutropenia. Multiple transcript variants have been found for this gene, only one of which is expected to express a protein. [provided by RefSeq, Sep 2009].

Inhibitor · Natural Compounds · Compound Libraries · Recombinant Proteins

This product is for Research Use Only · Not for Human or Veterinary or Therapeutic Use

Tel: 781-999-4286 E_mail: info@targetmol.com Address: 34 Washington Street, Wellesley Hills, MA 02481