

## Anti-FUT2 Polyclonal Antibody

### Product Details

Ig Type: IgG  
Reactivity: Human (predicted:Mouse,Rat,Pig,Cow,Horse,Rabbit,Sheep)  
Molecular Weight: Theoretical: 39 kDa. Actual: 54 kDa.  
Purification: Protein A purified

### Applications

#### 1. Sample:

SW480 (Human) Cell Lysate at 30 µg

HepG2 (Human) Cell Lysate at 30 µg

Primary: Anti-FUT2 (TMAB-00721) at 1/1000 dilution

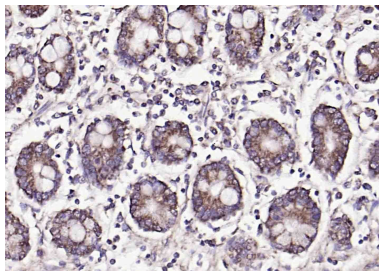
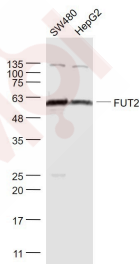
Secondary: IRDye800CW Goat Anti-Rabbit IgG at 1/20000 dilution

Predicted band size: 39 kDa

Observed band size: 54 kDa

Verified Activity:

2. Paraformaldehyde-fixed, paraffin embedded (Human duodenum); Antigen retrieval by boiling in sodium citrate buffer (pH6.0) for 15 min; Block endogenous peroxidase by 3% hydrogen peroxide for 20 min; Blocking buffer (normal goat serum) at 37°C for 30 min; Incubation with (FUT2) Polyclonal Antibody, Unconjugated (TMAB-00721) at 1:200 overnight at 4°C, followed by operating according to SP Kit (Rabbit) instructions and DAB staining.



Application: IF,IHC-Fr,IHC-P,WB

Recommended WB: 1:500-2000; IHC-P: 1:100-500; IHC-Fr: 1:100-500; IF: 1:100-500

## A DRUG SCREENING EXPERT

---

### Properties

Stability & Storage: Store at -20°C or -80°C for 12 months. Avoid repeated freeze-thaw cycles.

Shipping: Shipping with blue ice.

---

### Antigen Details

Immunogen: KLH conjugated synthetic peptide: Human FUT2

Antigen Species: Human

Gene ID: 2524

Uniprot ID: Q10981

Synonyms: Se;SEC2;Fucosyltransferase 2;Secretor factor;SE2

Biology Area: Other secreted molecules,Amino acid metabolism,Amino Acids

---

### Research Background

Creates a soluble precursor oligosaccharide FuC-alpha ((1,2)Galbeta-) called the H antigen which is an essential substrate for the final step in the soluble A and B antigen synthesis pathway. H and Se enzymes fucosylate the same acceptor substrates but exhibit different Km values. FUT2 is expressed on the surface of several human tumor cell lines such as BEL-7404, SPC-A-1, and SGC-7901.

**Inhibitor · Natural Compounds · Compound Libraries · Recombinant Proteins**

This product is for Research Use Only · Not for Human or Veterinary or Therapeutic Use

Tel:781-999-4286 E\_mail:info@targetmol.com Address:34 Washington Street,Wellesley Hills,MA 02481