

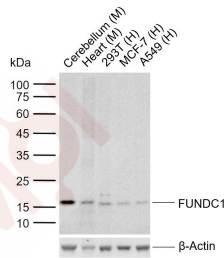
Anti-FUNDC1 Polyclonal Antibody

Product Details

Ig Type: IgG
Reactivity: Human, Mouse, Rat
Molecular Weight: Theoretical: 17 kDa. Actual: 17 kDa.
Purification: Protein A purified

Applications

Sample:
 Lane 1: Mouse Cerebellum tissue lysates
 Lane 2: Mouse Heart tissue lysates
 Lane 3: Human 293T cell lysates
 Lane 4: Human MCF-7 cell lysates
Verified Activity:
 Lane 5: Human A549 cell lysates
Primary: Anti-FUNDC1 (TMAB-00720) at 1/800 dilution
Secondary: IRDye800CW Goat Anti-Rabbit IgG at 1/20000 dilution
Predicted band size: 17 kDa
Observed band size: 17 kDa



Application: WB
Recommended: WB=1:300-800

Properties

Stability & Storage: Store at -20°C or -80°C for 12 months. Avoid repeated freeze-thaw cycles.
Shipping: Shipping with blue ice.

Antigen Details

Immunogen: KLH conjugated synthetic peptide: mouse FUNDC1
Antigen Species: Mouse
Gene ID: 72018
Uniprot ID: Q9DB70
Synonyms: FUNDC1; FUN14 domain containing protein 1
Biology Area: Other Antibodies

Research Background

FUNDC1 is a 155 amino acid protein belonging to the FUN14 family. The gene encoding FUNDC1 maps to human chromosome Xp11.3 and mouse chromosome X A1.2. The X and Y chromosomes are the human sex chromosomes. Chromosome X consists of about 153 million base pairs and nearly 1,000 genes. The combination of an X and Y chromosome lead to normal male development while two copies of X lead to normal female development. More than one copy of the X chromosome with a Y chromosome causes Klinefelter's syndrome. A single copy of X alone leads to Turner's syndrome. More than 2 copies of the X chromosome, in the absence of a Y chromosome, is known as Triple X syndrome. Color blindness, hemophilia, and Duchenne muscular dystrophy are well known X chromosome-linked conditions which affect males more frequently as males carry a single X chromosome.

Inhibitor · Natural Compounds · Compound Libraries · Recombinant Proteins

This product is for Research Use Only· Not for Human or Veterinary or Therapeutic Use

Tel:781-999-4286 E_mail:info@targetmol.com Address:34 Washington Street,Wellesley Hills,MA 02481