

Anti-FTH Antibody (9C880)

Product Details

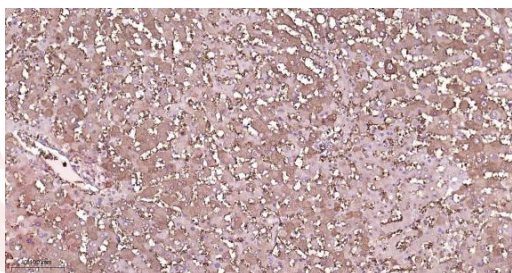
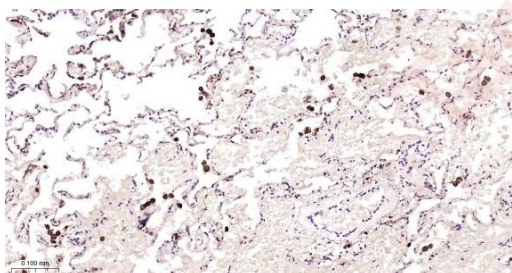
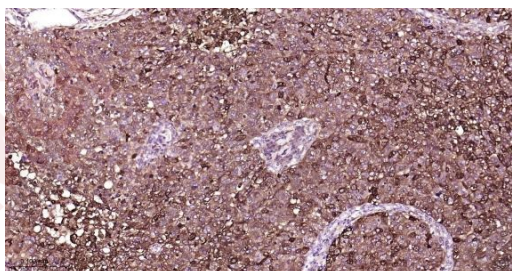
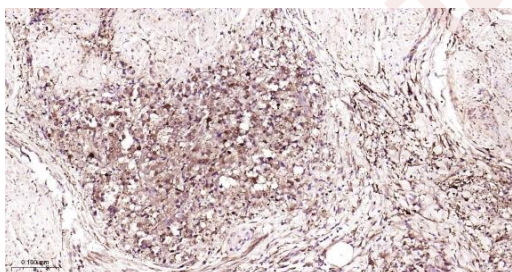
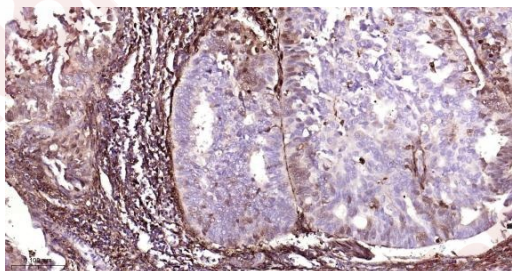
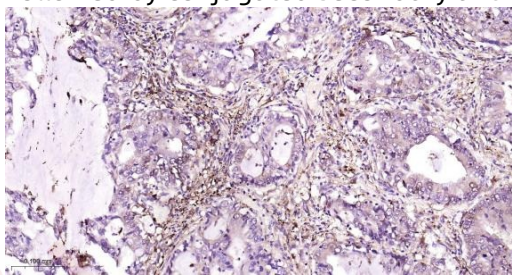
Ig Type:	IgG
Reactivity:	Human
Molecular Weight:	Theoretical: 20 kDa. Actual: 21 kDa.
Clone:	9C880
Purification:	Protein A purified

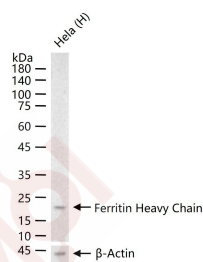
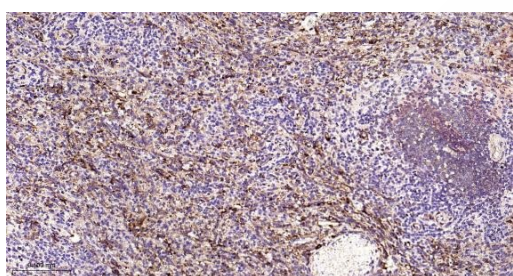
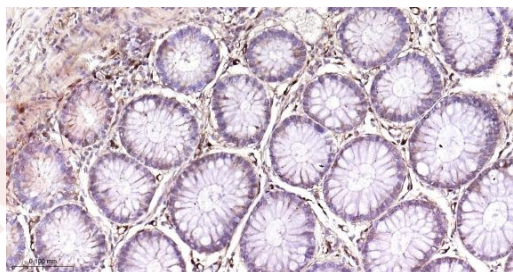
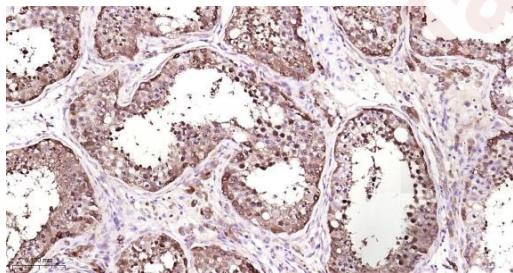
Applications

Verified Activity:

1. Paraformaldehyde-fixed, paraffin embedded Human Lung Cancer; Antigen retrieval by boiling in sodium citrate buffer (pH6.0) for 15 min; Antibody incubation Ferritin Heavy Chain Monoclonal Antibody, Unconjugated (TMAB-00718) at 1:200 overnight at 4°C, followed by conjugation to the secondary antibody and DAB staining.
2. Paraformaldehyde-fixed, paraffin embedded Human Liver Cancer; Antigen retrieval by boiling in sodium citrate buffer (pH6.0) for 15 min; Antibody incubation Ferritin Heavy Chain Monoclonal Antibody, Unconjugated (TMAB-00718) at 1:200 overnight at 4°C, followed by conjugation to the secondary antibody and DAB staining.
3. Paraformaldehyde-fixed, paraffin embedded Human Prostate Cancer; Antigen retrieval by boiling in sodium citrate buffer (pH6.0) for 15 min; Antibody incubation Ferritin Heavy Chain Monoclonal Antibody, Unconjugated (TMAB-00718) at 1:200 overnight at 4°C, followed by conjugation to the secondary antibody and DAB staining.
4. Paraformaldehyde-fixed, paraffin embedded Human Breast Cancer; Antigen retrieval by boiling in sodium citrate buffer (pH6.0) for 15 min; Antibody incubation Ferritin Heavy Chain Monoclonal Antibody, Unconjugated (TMAB-00718) at 1:200 overnight at 4°C, followed by conjugation to the secondary antibody and DAB staining.
5. Paraformaldehyde-fixed, paraffin embedded Human Lung; Antigen retrieval by boiling in sodium citrate buffer (pH6.0) for 15 min; Antibody incubation Ferritin Heavy Chain Monoclonal Antibody, Unconjugated (TMAB-00718) at 1:200 overnight at 4°C, followed by conjugation to the secondary antibody and DAB staining.
6. Paraformaldehyde-fixed, paraffin embedded Human Liver; Antigen retrieval by boiling in sodium citrate buffer (pH6.0) for 15 min; Antibody incubation Ferritin Heavy Chain Monoclonal Antibody, Unconjugated (TMAB-00718) at 1:200 overnight at 4°C, followed by conjugation to the secondary antibody and DAB staining.
7. Paraformaldehyde-fixed, paraffin embedded Human Testicles; Antigen retrieval by boiling in sodium citrate buffer (pH6.0) for 15 min; Antibody incubation Ferritin Heavy Chain Monoclonal Antibody, Unconjugated (TMAB-00718) at 1:200 overnight at 4°C, followed by conjugation to the secondary antibody and DAB staining.
8. Paraformaldehyde-fixed, paraffin embedded Human Colon; Antigen retrieval by boiling in sodium citrate buffer (pH6.0) for 15 min; Antibody incubation Ferritin Heavy Chain Monoclonal Antibody, Unconjugated (TMAB-00718) at 1:200 overnight at 4°C, followed by conjugation to the secondary antibody and DAB staining.
9. Paraformaldehyde-fixed, paraffin embedded Human Spleen; Antigen retrieval by boiling in sodium citrate buffer (pH6.0) for 15 min; Antibody incubation Ferritin Heavy Chain Monoclonal Antibody, Unconjugated (TMAB-00718) at 1:200 overnight at 4°C, followed by conjugation to the secondary antibody and DAB staining.

10. 25 µg total protein per Lane of various lysates probed with Ferritin Heavy Chain monoclonal antibody, unconjugated (TMAB-00718) at 1:1000 dilution and 4°C overnight incubation. Followed by conjugated secondary antibody incubation at RT for 60 min.





Application: IF,IHC-Fr,IHC-P,WB

Recommended WB: 1:500-2000; IHC-P: 1:100-500; IHC-Fr: 1:100-500; IF: 1:100-500

Properties

Stability & Storage: Store at -20°C or -80°C for 12 months. Avoid repeated freeze-thaw cycles.

Shipping: Shipping with blue ice.

Antigen Details

Immunogen: A synthesized peptide: human Ferritin heavy chain

Antigen Species: Human

Gene ID: 2495

Uniprot ID: P02794

Synonyms: FTHL6;FTH;FTH1;Cell proliferation-inducing gene 15 protein;Ferritin H subunit;Ferritin heavy chain

Biology Area: Serum Proteins,Vitamins / minerals,Neurodegenerative disease,Alzheimer's disease,Vitamins / Minerals

Research Background

Mammalian ferritins consist of 24 subunits made up of two types of poly-peptide chains, ferritin heavy chain and ferritin light chain, which each have unique functions. Ferritin heavy chains catalyze the first step in iron storage, the oxidation of FeII, whereas ferritin light chains promote the nucleation of ferrihydrite, enabling storage of FeIII. The most prominent role of mammalian ferritins is to provide iron-buffering capacity to cells. In addition to iron buffering, heavy chain ferritin is also involved in the regulation of thymidine biosynthesis via increased expression of cytoplasmic serine hydroxymethyltransferase, which is a limiting factor in thymidylate synthesis in MCF-7 cells. Light chain ferritin is involved in cataracts by at least two mechanisms: hereditary hyperferritinemia cataract syndrome, in which light chain ferritin is overexpressed; and oxidative stress, an important factor in the development of aging-related cataracts.

Inhibitor · Natural Compounds · Compound Libraries · Recombinant Proteins

This product is for Research Use Only · Not for Human or Veterinary or Therapeutic Use

Tel:781-999-4286 E_mail:info@targetmol.com Address:34 Washington Street,Wellesley Hills,MA 02481