

Anti-FSHR Polyclonal Antibody 2

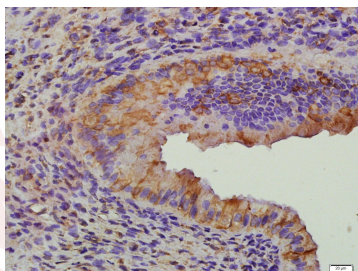
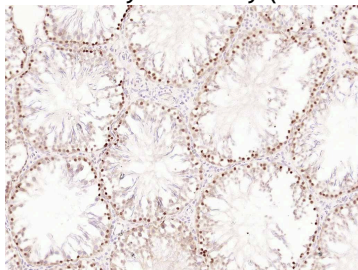
Product Details

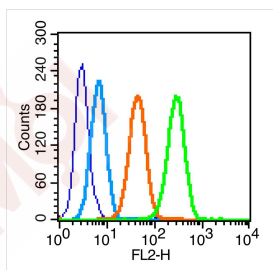
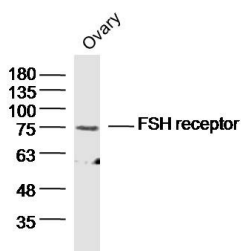
Ig Type:	IgG
Reactivity:	Human, Mouse, Rat (predicted: Dog, Pig, Cow, Horse, Sheep)
Molecular Weight:	Theoretical: 78 kDa. Actual: 78 kDa.
Purification:	Protein A purified

Applications

Verified Activity:

1. Paraformaldehyde-fixed, paraffin embedded (rat testis); Antigen retrieval by boiling in sodium citrate buffer (pH6.0) for 15 min; Block endogenous peroxidase by 3% hydrogen peroxide for 20 min; Blocking buffer (normal goat serum) at 37°C for 30 min; Antibody incubation with (CBFb) Polyclonal Antibody, Unconjugated (TMAB-00717) at 1:200 overnight at 4°C, followed by operating according to SP Kit (Rabbit) instructions and DAB staining.
2. Paraformaldehyde-fixed, paraffin embedded (rat ovary); Antigen retrieval by boiling in sodium citrate buffer (pH6.0) for 15 min; Block endogenous peroxidase by 3% hydrogen peroxide for 20 min; Blocking buffer (normal goat serum) at 37°C for 30 min; Antibody incubation with (FSH receptor) Polyclonal Antibody, Unconjugated (TMAB-00717) at 1:400 overnight at 4°C, followed by a conjugated secondary antibody for 20 min and DAB staining.
3. Sample: Ovary (mouse) Lysate at 40 µg
 Primary: Anti-FSH receptor (TMAB-00717) at 1/300 dilution
 Secondary: IRDye800CW Goat Anti-Rabbit IgG at 1/20000 dilution
 Predicted band size: 78 kDa
 Observed band size: 78 kDa
4. Blank control (blue line): MCF7 (fixed with 70% methanol overnight at 4°C).
 Primary Antibody (green line): Rabbit Anti-FSH receptor antibody (TMAB-00717), Dilution: 0.2 µg/10⁶ cells;
 Isotype Control Antibody (orange line): Rabbit IgG.
 Secondary Antibody (white blue line): Goat anti-rabbit IgG-PE, Dilution: 1 µg/test.





Application: FCM,IF,IHC-Fr,IHC-P,WB

Recommended WB: 1:500-2000; IHC-P: 1:100-500; IHC-Fr: 1:100-500; IF: 1:100-500; FCM: 1ug/Test

Properties

Stability & Storage: Store at -20°C or -80°C for 12 months. Avoid repeated freeze-thaw cycles.

Shipping: Shipping with blue ice.

Antigen Details

Immunogen: KLH conjugated synthetic peptide: human FSH receptor

Antigen Species: Human

Gene ID: 2492

Uniprot ID: P23945

Synonyms: Follitropin receptor;LGR1;Follicle-stimulating hormone receptor;FSH-R;FSHR

Biology Area: Gonadotrophic axis,More GPCR,GPCR

Research Background

The protein encoded by this gene belongs to family 1 of G-protein coupled receptors. It is the receptor for follicle stimulating hormone and functions in gonad development. Mutations in this gene cause ovarian dysgenesis type 1, and also ovarian hyperstimulation syndrome. Alternative splicing results in multiple transcript variants. [provided by RefSeq, Mar 2010]

Inhibitor · Natural Compounds · Compound Libraries · Recombinant Proteins

This product is for Research Use Only · Not for Human or Veterinary or Therapeutic Use

Tel:781-999-4286 E_mail:info@targetmol.com Address:34 Washington Street,Wellesley Hills,MA 02481