

Anti-FSHR Polyclonal Antibody

Product Details

Ig Type:	IgG
Reactivity:	Human,Mouse,Rat (predicted:Dog,Pig,Cow,Horse,Sheep,GuineaPig)
Molecular Weight:	Theoretical: 78 kDa. Actual: 78 kDa.
Purification:	Protein A purified

Applications

1. Paraformaldehyde-fixed, paraffin embedded (rat ovary); Antigen retrieval by boiling in sodium citrate buffer (pH6.0) for 15 min; Block endogenous peroxidase by 3% hydrogen peroxide for 20 min; Blocking buffer (normal goat serum) at 37°C for 30 min; Antibody incubation with (FSH receptor) Polyclonal Antibody, Unconjugated (TMAB-00716) at 1:200 overnight at 4°C, followed by a conjugated secondary for 20 min and DAB staining.
2. Tissue/cell: human placenta tissue; 4% Paraformaldehyde-fixed and paraffin-embedded; Antigen retrieval: citrate buffer (0.01M, pH6.0), Boiling bathing for 15 min; Block endogenous peroxidase by 3% Hydrogen peroxide for 30 min; Blocking buffer (normal goat serum) at 37°C for 20 min;

Incubation: Anti-FSH receptor Polyclonal Antibody, Unconjugated (TMAB-00716) 1:200, overnight at 4°C, followed by conjugation to the secondary antibody and DAb staining.

3. Blank control: HUVEC cells (blue). Primary Antibody: Rabbit Anti-FSH receptor antibody (TMAB-00716), Dilution: 1 µg in 100 µL 1X PBS containing 0.5% BSA; Isotype Control Antibody: Rabbit IgG (orange), used under the same conditions; Secondary Antibody: Goat anti-rabbit IgG-Pe (white blue), Dilution: 1:200 in 1 X PBS containing 0.5% BSA.

Verified Activity:

Protocol

The cells were fixed with 2% paraformaldehyde (10 min). Primary antibody (TMAB-00716, 1 µg/1x10⁶ cells) were incubated for 30 min on the ice, followed by 1 X PBS containing 0.5% BSA + 10% goat serum (15 min) to block non-specific protein-protein interactions. Then the Goat Anti-rabbit IgG/PE antibody was added into the blocking buffer mentioned above to react with the primary antibody at 1/200 dilution for 30 min on ice.

4. Sample:

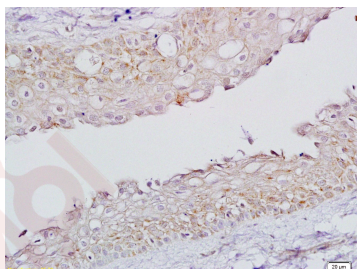
Testis (Mouse) Lysate at 40 µg

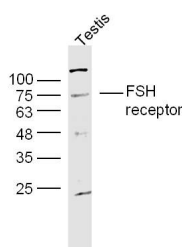
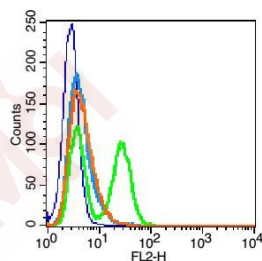
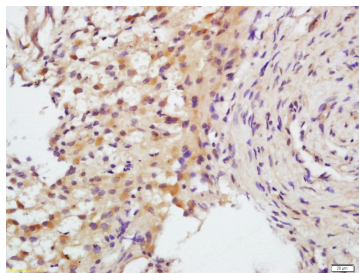
Primary: Anti-FSH receptor (TMAB-00716) at 1/300 dilution

Secondary: IRDye800CW Goat Anti-Rabbit IgG at 1/20000 dilution

Predicted band size: 78 kDa

Observed band size: 78 kDa





Application: FCM,IF,IHC-Fr,IHC-P,WB

Recommended WB: 1:500-2000; IHC-P: 1:100-500; IHC-Fr: 1:100-500; IF: 1:100-500; FCM: 1µg/Test

Properties

Stability & Storage: Store at -20°C or -80°C for 12 months. Avoid repeated freeze-thaw cycles.

Shipping: Shipping with blue ice.

Antigen Details

Immunogen: KLH conjugated synthetic peptide: human FSHR

Antigen Species: Human

Gene ID: 2492

Uniprot ID: P23945

Synonyms: FSHR;Follitropin receptor;LGR1;Follicle-stimulating hormone receptor;FSH-R

Biology Area: Gonadotrophic axis,More GPCR,GPCR

Research Background

The protein encoded by this gene belongs to family 1 of G-protein coupled receptors. It is the receptor for follicle stimulating hormone and functions in gonad development. Mutations in this gene cause ovarian dysgenesis type 1, and also ovarian hyperstimulation syndrome. Alternative splicing results in multiple transcript variants. [provided by RefSeq, Mar 2010]

Inhibitor · Natural Compounds · Compound Libraries · Recombinant Proteins

This product is for Research Use Only · Not for Human or Veterinary or Therapeutic Use

Tel:781-999-4286 E_mail:info@targetmol.com Address:34 Washington Street,Wellesley Hills,MA 02481