

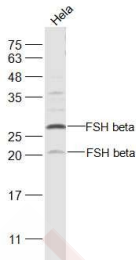
## Anti-FSH beta Polyclonal Antibody

### Product Details

Ig Type:	IgG
Reactivity:	Human (predicted:Pig,Cow,Horse,Rabbit,Sheep,GuineaPig)
Molecular Weight:	Theoretical: 12 kDa. Actual: 22/27 kDa.
Purification:	Protein A purified

### Applications

Sample:	Hela (Human) Cell Lysate at 30 µg
Verified Activity:	Primary: Anti-FSH beta (TMAB-00715) at 1/500 dilution Secondary: IRDye800CW Goat Anti-Rabbit IgG at 1/20000 dilution Predicted band size: 12 kDa Observed band size: 22/27 kDa



Application:	WB
Recommended	WB: 1:500-2000

### Properties

Stability & Storage:	Store at -20°C or -80°C for 12 months. Avoid repeated freeze-thaw cycles.
Shipping:	Shipping with blue ice.

### Antigen Details

Immunogen:	KLH conjugated synthetic peptide: human FSHB
Antigen Species:	Human
Gene ID:	2488
Uniprot ID:	P01225
Synonyms:	follicle stimulating hormone, $\beta$ polypeptide;follicle stimulating hormone, beta polypeptide; HH24;FSH $\beta$
Biology Area:	Hormone biosynthesis,Hormone biosynthesis,Hormones

### Research Background

The pituitary glycoprotein hormone family includes follicle-stimulating hormone, luteinizing hormone, chorionic gonadotropin, and thyroid-stimulating hormone. All of these glycoproteins consist of an identical alpha subunit and a hormone-specific beta subunit. This gene encodes the beta subunit of follicle-stimulating hormone. In conjunction

## A DRUG SCREENING EXPERT

---

with luteinizing hormone, follicle-stimulating hormone induces egg and sperm production. Alternative splicing results in two transcript variants encoding the same protein. [provided by RefSeq, Jul 2008]

**Inhibitor · Natural Compounds · Compound Libraries · Recombinant Proteins**

This product is for Research Use Only · Not for Human or Veterinary or Therapeutic Use

Tel:781-999-4286 E\_mail:info@targetmol.com Address:34 Washington Street,Wellesley Hills,MA 02481