

Anti-FPRL1 Polyclonal Antibody 2

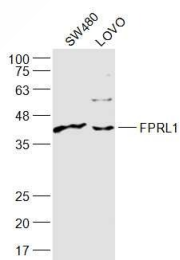
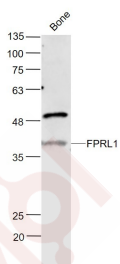
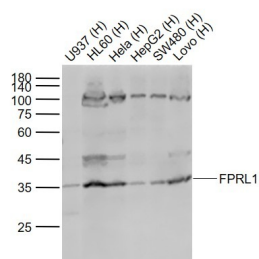
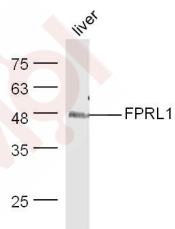
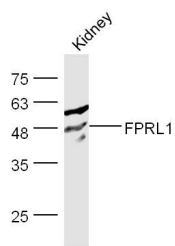
Product Details

Ig Type:	IgG
Reactivity:	Human,Mouse
Molecular Weight:	Theoretical: 39 kDa. Actual: 39 kDa.
Purification:	Protein A purified

Applications

1. Sample:
kidney (Mouse) Lysate at 40 µg
Primary: Anti-FPRL1 at 1/300 dilution
Secondary: IRDye800CW Goat Anti-Rabbit IgG at 1/20000 dilution
Predicted band size: 39 kDa
Observed band size: 48 kDa
2. Sample: Liver (Mouse) Lysate at 40 µg
Primary: Anti-FPRL1 (TMAB-00714) at 1/300 dilution
Secondary: IRDye800CW Goat Anti-Rabbit IgG at 1/20000 dilution
Predicted band size: 39 kDa
Observed band size: 47 kDa
3. Sample:
Lane 1: U937 (Human) Cell Lysate at 30 µg
Lane 2: HL60 (Human) Cell Lysate at 30 µg
Lane 3: Hela (Human) Cell Lysate at 30 µg
Lane 4: HepG2 (Human) Cell Lysate at 30 µg
Lane 5: SW480 (Human) Cell Lysate at 30 µg
Lane 6: LOVO (Human) Cell Lysate at 30 µg
Primary: Anti-FPRL1 (TMAB-00714) at 1/1000 dilution
Secondary: IRDye800CW Goat Anti-Rabbit IgG at 1/20000 dilution
Predicted band size: 39 kDa
Observed band size: 35 kDa
4. Sample:
Bone (Mouse) Lysate at 40 µg
Primary: Anti-FPRL1 (TMAB-00714) at 1/1000 dilution
Secondary: IRDye800CW Goat Anti-Rabbit IgG at 1/20000 dilution
Predicted band size: 39 kDa
Observed band size: 39 kDa
5. Sample:
SW480 (Human) Cell Lysate at 30 µg
LOVO (Human) Cell Lysate at 30 µg
Primary: Anti-FPRL1 (TMAB-00714) at 1/1000 dilution
Secondary: IRDye800CW Goat Anti-Rabbit IgG at 1/20000 dilution
Predicted band size: 39 kDa
Observed band size: 39 kDa

Verified Activity:



Application: WB
Recommended WB: 1:500-2000

Properties

Stability & Storage: Store at -20°C or -80°C for 12 months. Avoid repeated freeze-thaw cycles.

Shipping: Shipping with blue ice.

Antigen Details

Immunogen:	KLH conjugated synthetic peptide: human FPRL1
Antigen Species:	Human
Gene ID:	2358
Uniprot ID:	P25090
Synonyms:	Formyl peptide receptor 2;FPRH 2;LXA4R;FPRH 1;Lipoxin A4 receptor;FPRL 1;FPR 2;FMLP-R-II; FMLPX;N-formyl peptide receptor 2;FPR2A;FMLP R I;Formyl peptide receptor like 1;FMLP R II; Formyl peptide receptor related;FPRL1;FPR2;FMLP-R-I;FMLP related receptor I;RFP;FPRH2;LXA4 receptor;ALXR;FPRH1;HM63
Biology Area:	Cell adhesion molecules,GPCR

Research Background

FPRL1 is a low affinity receptor to N-formyl-methionyl peptides, which are powerful neutrophils chemotactic factors. Binding of FMLP to the receptor causes activation of neutrophils. This response is mediated via a G-protein that activates a phosphatidylinositol-calcium second messenger system. The activation of LXA4R could result in an anti-inflammatory outcome counteracting the actions of proinflammatory signals such as LTB4 (leukotriene B4). FPRL1 has been reported in phagocytes, monocytes, neutrophils, differentiated myeloid cells from bone marrow, granulocyte HL-60 cells, and synovial fibroblasts. ESTs have been isolated from blood, leukocyte, lung, and placenta libraries.

Inhibitor · Natural Compounds · Compound Libraries · Recombinant Proteins

This product is for Research Use Only · Not for Human or Veterinary or Therapeutic Use

Tel:781-999-4286 E_mail:info@targetmol.com Address:34 Washington Street,Wellesley Hills,MA 02481