

Anti-FPR1 Polyclonal Antibody

Product Details

Ig Type: IgG
Reactivity: Human (predicted:Mouse,Rat)
Molecular Weight: Theoretical: 39 kDa. Actual: 60 kDa.
Purification: Protein A purified

Applications

Sample:

Lane 1: U87MG (Human) Cell Lysate at 30 μ g

Lane 2: U251 (Human) Cell Lysate at 30 μ g

Lane 3: U937 (Human) Cell Lysate at 30 μ g

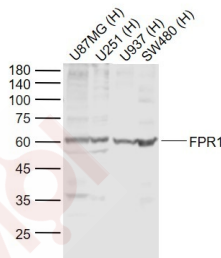
Verified Activity: Lane 4: SW480 (Human) Cell Lysate at 30 μ g

Primary: Anti-FPR1 (TMAB-00712) at 1/1000 dilution

Secondary: IRDye800CW Goat Anti-Rabbit IgG at 1/20000 dilution

Predicted band size: 60 kDa

Observed band size: 60 kDa



Application: WB

Recommended WB: 1:500-2000

Properties

Stability & Storage: Store at -20°C or -80°C for 12 months. Avoid repeated freeze-thaw cycles.

Shipping: Shipping with blue ice.

Antigen Details

Immunogen: KLH conjugated synthetic peptide: human FPR1

Antigen Species: Human

Gene ID: 2357

Uniprot ID: P21462

Synonyms: N-formylpeptide chemoattractant receptor;fMLP receptor;N-formyl peptide receptor (FPR); FPR1;fMet-Leu-Phe receptor

Biology Area: Innate and adaptive immunity,Macrophage / Inflamm.

Research Background

This gene encodes a G protein-coupled receptor of mammalian phagocytic cells that is a member of the G-protein coupled receptor 1 family. The protein mediates the response of phagocytic cells to invasion of the host by microorganisms and is important in host defense and inflammation.[provided by RefSeq, Jul 2010]

Inhibitor · Natural Compounds · Compound Libraries · Recombinant Proteins

This product is for Research Use Only · Not for Human or Veterinary or Therapeutic Use

Tel:781-999-4286 E_mail:info@targetmol.com Address:34 Washington Street,Wellesley Hills,MA 02481