

Anti-FOXP3 Polyclonal Antibody 2

Product Details

| | |
|-------------------|--|
| Ig Type: | IgG |
| Reactivity: | Human, Mouse (predicted: Rat, Dog, Pig, Cow, Horse, Rabbit, Sheep, Guinea Pig) |
| Molecular Weight: | Theoretical: 47 kDa. |
| Purification: | Protein A purified |

Applications

1. Blank control: Mouse spleen.

Primary Antibody (green line): Rabbit Anti-FoxP3/PE Conjugated antibody (TMAB-00710-PE)

Dilution: 0.2 $\mu\text{g}/10^6$ cells;

Isotype Control Antibody (orange line): Rabbit IgG-PE.

Protocol

The cells were fixed with 4% PFA (10 min at room temperature) and then permeabilized with 90% ice-cold methanol for 20 min at -20°C . The cells were then incubated in 5% BSA to block non-specific protein-protein interactions for 30 min at room temperature. The cells were stained with Primary Antibody for 30 min at room temperature.

2. Blank control: MCF7. Primary Antibody (green line): Rabbit Anti-FoxP3 antibody (TMAB-00710)

Dilution: 2 $\mu\text{g}/10^6$ cells;

Isotype Control Antibody (orange line): Rabbit IgG.

Verified Activity: Secondary Antibody: Goat anti-rabbit IgG-AF647

Dilution: 1 $\mu\text{g}/\text{test}$.

Protocol

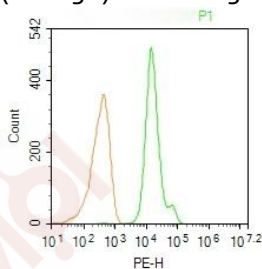
The cells were fixed with 4% PFA (10 min at room temperature) and then permeabilized with 90% ice-cold methanol for 20 min at -20°C . The cells were then incubated in 5% BSA to block non-specific protein-protein interactions for 30 min at room temperature. Cells stained with Primary Antibody for 30 min at room temperature. The secondary antibody used for 40 min at room temperature.

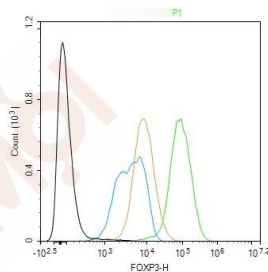
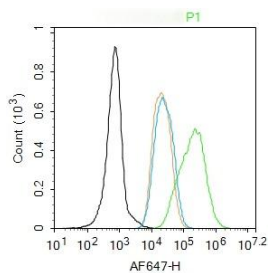
3. The MJ (H) cells were fixed with 4% PFA (10 min at room temperature) and then permeabilized with 90% ice-cold methanol for 20 min at -20°C , the cells then were incubated in 5% BSA to block non-specific protein-protein interactions (30 min at room temperature).

Primary Antibody (green): Rabbit Anti-FOXP3 antibody (TMAB-00710): 1 $\mu\text{g}/10^6$ cells;

Secondary Antibody (white blue): Goat anti-Rabbit IgG-BF488: 1 $\mu\text{g}/\text{test}$. Isotype Control

(orange): Rabbit IgG. Blank control (black): PBS.





Application: FCM
Recommended FCM: 1ug/Test

Properties

Stability & Storage: Store at -20°C or -80°C for 12 months. Avoid repeated freeze-thaw cycles.

Shipping: Shipping with blue ice.

Antigen Details

Immunogen: KLH conjugated synthetic peptide: human FoxP3

Antigen Species: Human

Gene ID: 50943

Uniprot ID: Q9BZS1

Biology Area: Chromatid Cohesion,FOXP,Regulatory T Cells

Research Background

The protein encoded by this gene is a member of the forkhead/winged-helix family of transcriptional regulators. Defects in this gene are the cause of immunodeficiency polyendocrinopathy, enteropathy, X-linked syndrome (IPEX), also known as X-linked autoimmunity-immunodeficiency syndrome. Alternatively spliced transcript variants encoding different isoforms have been identified. [provided by RefSeq, Jul 2008].

Inhibitor · Natural Compounds · Compound Libraries · Recombinant Proteins

This product is for Research Use Only · Not for Human or Veterinary or Therapeutic Use

Tel:781-999-4286 E_mail:info@targetmol.com Address:34 Washington Street,Wellesley Hills,MA 02481