

Anti-FOXO1A Polyclonal Antibody

Product Details

Ig Type:	IgG
Reactivity:	Human,Rat (predicted:Mouse,Chicken,Dog,Pig,Cow,Horse,Rabbit)
Molecular Weight:	Theoretical: 72 kDa. Actual: 72 kDa.
Purification:	Protein A purified

Applications

1. Tissue/cell: human bladder carcinoma; 4% Paraformaldehyde-fixed and paraffin-embedded;

Antigen retrieval: citrate buffer (0.01M, pH6.0), Boiling bathing for 15 min; Block endogenous peroxidase by 3% Hydrogen peroxide for 30 min; Blocking buffer (normal goat serum) at 37°C for 20 min;

Incubation: Anti-FOXO1A Polyclonal Antibody, Unconjugated (TMAB-00708) 1:200, overnight at 4°C, followed by conjugation to the secondary antibody and DAB staining.

2. Paraformaldehyde-fixed, paraffin embedded (rat brain); Antigen retrieval by boiling in sodium citrate buffer (pH6.0) for 15 min; Block endogenous peroxidase by 3% hydrogen peroxide for 20 min; Blocking buffer (normal goat serum) at 37°C for 30 min; Antibody incubation with (FOXO1A) Polyclonal Antibody, Unconjugated (TMAB-00708) at 1:200 overnight at 4°C, followed by operating according to SP Kit (Rabbit) instructions and DAB staining.

3. Blank control: HepG2. Primary Antibody (green line): Rabbit Anti-FOXO1A antibody (TMAB-00708)

Dilution: 1 µg/10⁶ cells;

Isotype Control Antibody (orange line): Rabbit IgG.

Secondary Antibody: Goat anti-rabbit IgG-AF647

Dilution: 1 µg/test.

Protocol

Verified Activity:

The cells were fixed with 4% PFA (10 min at room temperature) and then permeabilized with 90% ice-cold methanol for 20 min at -20°C. The cells were then incubated in 5% BSA to block non-specific protein-protein interactions for 30 min at room temperature. Cells stained with Primary Antibody for 30 min at room temperature. The secondary antibody used for 40 min at room temperature.

4. Blank control: HepG2. Primary Antibody (green line): Rabbit Anti-FOXO1A antibody (TMAB-00708)

Dilution: 1 µg/10⁶ cells;

Isotype Control Antibody (orange line): Rabbit IgG.

Secondary Antibody: Goat anti-rabbit IgG-PE

Dilution: 1 µg/test.

Protocol

The cells were fixed with 4% PFA (10 min at room temperature) and then permeabilized with 90% ice-cold methanol for 20 min at -20°C. The cells were then incubated in 5% BSA to block non-specific protein-protein interactions for 30 min at room temperature. Cells stained with Primary Antibody for 30 min at room temperature. The secondary antibody used for 40 min at room temperature.

5. Sample:

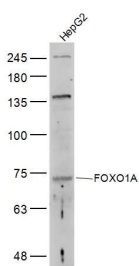
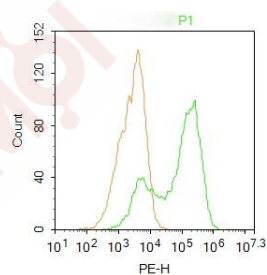
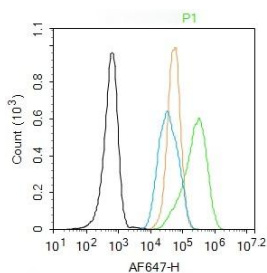
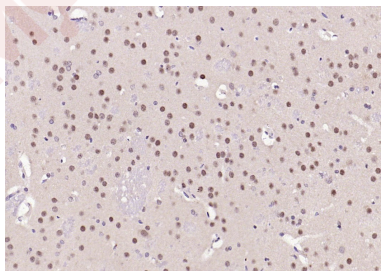
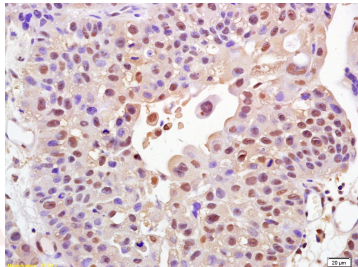
HepG2 (Human) Cell Lysate at 30 µg

Primary: Anti-FOXO1A (TMAB-00708) at 1/300 dilution

Secondary: IRDye800CW Goat Anti-Rabbit IgG at 1/20000 dilution

Predicted band size: 72 kDa

Observed band size: 72 kDa



Application: FCM,IF,IHC-Fr,IHC-P,WB

Recommended FCM=2 μg/Test; IF=1:100-500; IHC-Fr=1:100-500; IHC-P=1:100-500; WB=1:500-2000

A DRUG SCREENING EXPERT

Properties

Stability & Storage: Store at -20°C or -80°C for 12 months. Avoid repeated freeze-thaw cycles.

Shipping: Shipping with blue ice.

Antigen Details

Immunogen: KLH conjugated synthetic peptide: human FKHR

Antigen Species: Human

Gene ID: 2308

Uniprot ID: Q12778

Synonyms: Forkhead box protein O1A;FKH1;FKHR;Forkhead box O1;Forkhead(Drosophila) homolog 1 (rhabdomyosarcoma);Forkhead box protein O1

Biology Area: Coactivators and repressors,Co-activators/co-repressors,FOXO,Obesity,Neurogenesis,Co-activators/co-repressors

Research Background

This gene belongs to the forkhead family of transcription factors which are characterized by a distinct forkhead domain. The specific function of this gene has not yet been determined; however, it may play a role in myogenic growth and differentiation. Translocation of this gene with PAX3 has been associated with alveolar rhabdomyosarcoma. [provided by RefSeq].

Inhibitor · Natural Compounds · Compound Libraries · Recombinant Proteins

This product is for Research Use Only · Not for Human or Veterinary or Therapeutic Use

Tel:781-999-4286 E_mail:info@targetmol.com Address:34 Washington Street,Wellesley Hills,MA 02481