

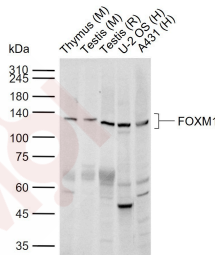
Anti-FOXM1 Polyclonal Antibody

Product Details

Ig Type: IgG
Reactivity: Human, Mouse, Rat (predicted: Pig, Cow, Horse, Rabbit, Sheep)
Molecular Weight: Theoretical: 84 kDa. Actual: 125 kDa.
Purification: Protein A purified

Applications

Sample:
 Lane 1: Mouse Thymus tissue lysates
 Lane 2: Mouse Testis tissue lysates
 Lane 3: Rat Testis tissue lysates
 Lane 4: Human U-2 OS cell lysates
 Lane 5: Human A431 cell lysates
Verified Activity:
 Primary: Anti-FOXM1 (TMAB-00705) at 1/1000 dilution
 Secondary: IRDye800CW Goat Anti-Rabbit IgG at 1/20000 dilution
 Predicted band size: 84 kDa
 Observed band size: 125 kDa



Application: WB
Recommended: WB: 1:500-2000

Properties

Stability & Storage: Store at -20°C or -80°C for 12 months. Avoid repeated freeze-thaw cycles.
Shipping: Shipping with blue ice.

Antigen Details

Immunogen: KLH conjugated synthetic peptide: human FOXM1
Antigen Species: Human
Gene ID: 2305
Uniprot ID: Q08050
Synonyms: FOXM1; Forkhead box protein M1; Winged-helix factor from INS-1 cells; Transcription factor Trident; M-phase phosphoprotein 2; MPM-2 reactive phosphoprotein 2; WIN; HFH11; FKHL16; MPP2; Forkhead-related protein FKHL16; Hepatocyte nuclear factor 3 forkhead homolog 11 (HFH-11; HNF-3/fork-head homolog 11)

Biology Area: Transcription factors,Forkhead Box,Other FOXes

Research Background

The Forkhead Box (Fox) proteins are an extensive family of transcription factors that share homology in the winged helix DNA-binding domain and the members of which play essential roles in a diverse range of developmental processes as well as cellular proliferation, differentiation, and longevity. The Fox factors are especially important in the establishment of the body axis and the development of tissues from all three germ layers. FOXM1 is also overexpressed in many human cancers and has a role in tumorigenesis.

Inhibitor · Natural Compounds · Compound Libraries · Recombinant Proteins

This product is for Research Use Only· Not for Human or Veterinary or Therapeutic Use

Tel:781-999-4286 E_mail:info@targetmol.com Address:34 Washington Street,Wellesley Hills,MA 02481