

Anti-FOSL1 Polyclonal Antibody

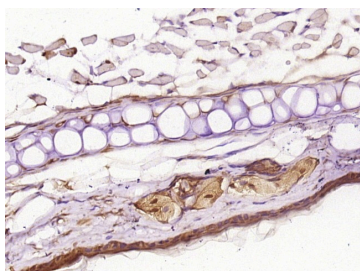
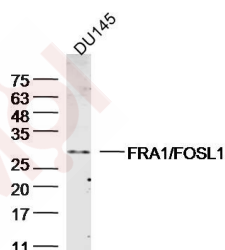
Product Details

Ig Type:	IgG
Reactivity:	Human,Mouse (predicted:Rat,Dog,Cow,Horse,Sheep)
Molecular Weight:	Theoretical: 30 kDa. Actual: 30 kDa.
Purification:	Protein A purified

Applications

1. Sample: DU145 Cell (Human) Lysate at 40 µg
Primary: Anti-FRA1/FOSL1 (TMAB-00702) at 1/300 dilution
Secondary: IRDye800CW Goat Anti-Rabbit IgG at 1/20000 dilution
Predicted band size: 30 kDa
Observed band size: 30 kDa

Verified Activity: 2. Paraformaldehyde-fixed, paraffin embedded (mouse skin tissue); Antigen retrieval by boiling in sodium citrate buffer (pH6.0) for 15 min; Block endogenous peroxidase by 3% hydrogen peroxide for 20 min; Blocking buffer (normal goat serum) at 37°C for 30 min; Antibody incubation with (FRA1) Polyclonal Antibody, Unconjugated (TMAB-00702) at 1:400 overnight at 4°C, followed by operating according to SP Kit (Rabbit) instructions and DAB staining.



Application: IF,IHC-Fr,IHC-P,WB

Recommended WB: 1:500-2000; IHC-P: 1:100-500; IHC-Fr: 1:100-500; IF: 1:100-500

Properties

Stability & Storage: Store at -20°C or -80°C for 12 months. Avoid repeated freeze-thaw cycles.

Shipping: Shipping with blue ice.

Antigen Details

Immunogen: KLH conjugated synthetic peptide: human FRA1/FOSL1

Antigen Species: Human

Gene ID: 8061

Uniprot ID: P15407

Synonyms: FRA-1;Fosl1;Fos-related antigen 1;Fra1

Biology Area: Leucine Zipper, Transcription Factors

Research Background

The Fos gene family consists of 4 members: FOS, FOSB, FOSL1, and FOSL2. These genes encode leucine zipper proteins that can dimerize with proteins of the JUN family, thereby forming the transcription factor complex AP-1. As such, the FOS proteins have been implicated as regulators of cell proliferation, differentiation, and transformation. [provided by RefSeq].

Inhibitor · Natural Compounds · Compound Libraries · Recombinant Proteins

This product is for Research Use Only · Not for Human or Veterinary or Therapeutic Use

Tel: 781-999-4286 E_mail: info@targetmol.com Address: 34 Washington Street, Wellesley Hills, MA 02481