

Anti-FOLR2 Polyclonal Antibody

Product Details

Ig Type: IgG
Reactivity: Human,Rat (predicted:Mouse,Horse)
Molecular Weight: Theoretical: 25 kDa. Actual: 25 kDa.
Purification: Protein A purified

Applications

1. Tissue/cell: rat brain tissue; 4% Paraformaldehyde-fixed and paraffin-embedded;
Antigen retrieval: citrate buffer (0.01M, pH6.0), Boiling bathing for 15 min; Block endogenous peroxidase by 3% Hydrogen peroxide for 30 min; Blocking buffer (normal goat serum) at 37°C for 20 min;
Incubation: Anti-FOLR2 Polyclonal Antibody, Unconjugated (TMAB-00696) 1:200, overnight at 4° C, followed by conjugation to the secondary antibody and DAb staining.

Verified Activity:

2. Sample:

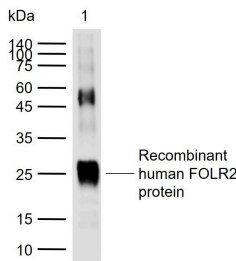
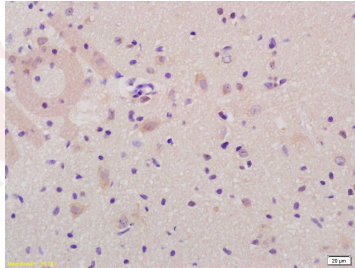
Lane 1: Recombinant human FOLR2 protein, N-His

Primary: Anti-FOLR2 (TMAB-00696) at 1/1000 dilution

Secondary: IRDye800CW Goat Anti-Rabbit IgG at 1/20000 dilution

Predicted band size: 25 kDa

Observed band size: 25 kDa



Application: IF,IHC-Fr,IHC-P,WB

Recommended WB: 1:500-2000; IHC-P: 1:100-500; IHC-Fr: 1:100-500; IF: 1:100-500

A DRUG SCREENING EXPERT

Properties

Stability & Storage: Store at -20°C or -80°C for 12 months. Avoid repeated freeze-thaw cycles.

Shipping: Shipping with blue ice.

Antigen Details

Immunogen: KLH conjugated synthetic peptide: human Folate receptor

Antigen Species: Human

Gene ID: 2350

Uniprot ID: P14207

Synonyms: β -HFR;FBP/PL-1;folate receptor 2 (fetal);BETA-HFR;FR- β ;FR-P3;FR-BETA;FBP

Biology Area: Vitamins / minerals,Vitamins / Minerals

Research Background

The protein encoded by this gene is a member of the folate receptor (FOLR) family, and these genes exist in a cluster on chromosome 11. Members of this gene family have a high affinity for folic acid and for several reduced folic acid derivatives, and they mediate delivery of 5-methyltetrahydrofolate to the interior of cells. This protein has a 68% and 79% sequence homology with the FOLR1 and FOLR3 proteins, respectively. Although this protein was originally thought to be specific to placenta, it can also exist in other tissues, and it may play a role in the transport of methotrexate in synovial macrophages in rheumatoid arthritis patients. Multiple transcript variants that encode the same protein have been found for this gene. [provided by RefSeq, Jul 2008]

Inhibitor · Natural Compounds · Compound Libraries · Recombinant Proteins

This product is for Research Use Only · Not for Human or Veterinary or Therapeutic Use

Tel:781-999-4286 E_mail:info@targetmol.com Address:34 Washington Street,Wellesley Hills,MA 02481