

Anti-FOLR1 Polyclonal Antibody

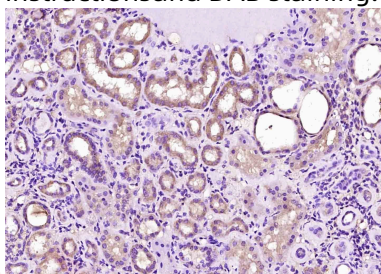
Product Details

Ig Type:	IgG
Reactivity:	Human (predicted:Rat,Cow,Rabbit,Sheep,Mouse)
Molecular Weight:	Theoretical: 27 kDa.
Purification:	Protein A purified

Applications

Verified Activity:

Paraformaldehyde-fixed, paraffin embedded (Human kidney tissue); Antigen retrieval by boiling in sodium citrate buffer (pH6.0) for 15 min; Block endogenous peroxidase by 3% hydrogen peroxide for 20 min; Blocking buffer (normal goat serum) at 37°C for 30 min; Antibody incubation with (Folate Receptor alpha) Polyclonal Antibody, Unconjugated (TMAB-00695) at 1:200 overnight at 4°C, followed by operating according to SP Kit (Rabbit) instructions and DAB staining.



Application:	IF,IHC-Fr,IHC-P
Recommended	IHC-P: 1:100-500; IHC-Fr: 1:100-500; IF: 1:100-500

Properties

Stability & Storage:	Store at -20°C or -80°C for 12 months. Avoid repeated freeze-thaw cycles.
Shipping:	Shipping with blue ice.

Antigen Details

Immunogen:	KLH conjugated synthetic peptide: human Folate Receptor alpha
Antigen Species:	Human
Gene ID:	2348
Uniprot ID:	P15328
Synonyms:	FOLR1;FR alpha;Folbp1;KB cells FBP;MOv18;FR α;FBP;Fbp1;FR-α;FR-alpha;Folate receptor alpha;Folate receptor 1;FOLR;Folate receptor α
Biology Area:	Tumor Associated

Research Background

The protein encoded by this gene is a member of the folate receptor family. Members of this gene family bind folic acid and its reduced derivatives, and transport 5-methyltetrahydrofolate into cells. This gene product is a secreted protein that either anchors to membranes via a glycosyl-phosphatidylinositol linkage or exists in a soluble form.

A DRUG SCREENING EXPERT

Mutations in this gene have been associated with neurodegeneration due to cerebral folate transport deficiency. Due to the presence of two promoters, multiple transcription start sites, and alternative splicing, multiple transcript variants encoding the same protein have been found for this gene. [provided by RefSeq, Oct 2009]

Inhibitor · Natural Compounds · Compound Libraries · Recombinant Proteins

This product is for Research Use Only · Not for Human or Veterinary or Therapeutic Use

Tel:781-999-4286 E_mail:info@targetmol.com Address:34 Washington Street,Wellesley Hills,MA 02481