

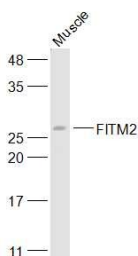
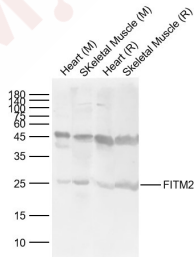
Anti-FITM2 Polyclonal Antibody

Product Details

Ig Type: IgG
Reactivity: Mouse,Rat (predicted:Human,Dog,Pig,Cow,Sheep)
Molecular Weight: Theoretical: 30 kDa. Actual: 25-30 kDa.
Purification: Protein A purified

Applications

1. Sample:
Lane 1: Mouse Heart Lysates
Lane 2: Mouse Skeletal Muscle Lysates
Lane 3: Rat Heart Lysates
Lane 4: Rat Skeletal Muscle Lysates
Primary: Anti-FITM2 (TMAB-00683) at 1/1000 dilution
Secondary: IRDye800CW Goat Anti-Rabbit IgG at 1/20000 dilution
Verified Activity: Predicted band size: 30 kDa
Observed band size: 25 kDa
2. Sample:
Muscle (Mouse) Lysate at 40 µg
Primary: Anti-FITM2 (TMAB-00683) at 1/300 dilution
Secondary: IRDye800CW Goat Anti-Rabbit IgG at 1/20000 dilution
Predicted band size: 30 kDa
Observed band size: 28 kD



Application: WB
Recommended WB: 1:500-2000

Properties

Stability & Storage: Store at -20°C or -80°C for 12 months. Avoid repeated freeze-thaw cycles.

Shipping: Shipping with blue ice.

Antigen Details

Immunogen: KLH conjugated synthetic peptide: human FITM2

Antigen Species: Human

Gene ID: 128486

Uniprot ID: Q8N6M3

Synonyms: Fit2;C20orf142;Fat storage-inducing transmembrane protein 2;Fat inducing transcript 2; dj881L22.2;Fat-inducing protein 2

Research Background

FIT2 belongs to an evolutionarily conserved family of proteins involved in fat storage (Kadereit et al., 2008 [PubMed 18160536]).[supplied by OMIM, May 2008]

Inhibitor · Natural Compounds · Compound Libraries · Recombinant Proteins

This product is for Research Use Only· Not for Human or Veterinary or Therapeutic Use

Tel:781-999-4286 E_mail:info@targetmol.com Address:34 Washington Street,Wellesley Hills,MA 02481