

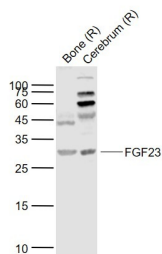
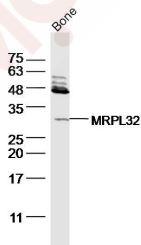
Anti-FGF-23 Polyclonal Antibody

Product Details

Ig Type:	IgG
Reactivity:	Human,Rat (predicted:Mouse,Dog,Pig,Cow,Horse,Rabbit,Sheep,GuineaPig)
Molecular Weight:	Theoretical: 27 kDa. Actual: 27 kDa.
Purification:	Protein A purified

Applications

Verified Activity:	1. Sample: bone (rat) lysate at 40 µg Primary: Anti-MRPL32 (TMAB-00671) at 1/300 dilution Secondary: IRDye800CW Goat Anti-Rabbit IgG at 1/20000 dilution Predicted band size: 27 kDa Observed band size: 27 kDa
	2. Sample: Lane 1: Bone (Rat) Lysate at 40 µg Lane 2: Cerebrum (Rat) Lysate at 40 µg Primary: Anti-FGF23 (TMAB-00671) at 1/1000 dilution Secondary: IRDye800CW Goat Anti-Rabbit IgG at 1/20000 dilution Predicted band size: 30/32 kDa Observed band size: 30 kDa



Application:	WB
Recommended	WB: 1:500-2000

Properties

Stability & Storage: Store at -20°C or -80°C for 12 months. Avoid repeated freeze-thaw cycles.

Shipping: Shipping with blue ice.

Antigen Details

Immunogen: KLH conjugated synthetic peptide: human Fibroblast growth factor 23

Antigen Species: Human

Gene ID: 8074

Uniprot ID: Q9GZV9

Synonyms: Fgf23;Fibroblast growth factor 23;FGF-23

Research Background

This gene encodes a member of the fibroblast growth factor family of proteins, which possess broad mitogenic and cell survival activities and are involved in a variety of biological processes. The product of this gene regulates phosphate homeostasis and transport in the kidney. The full-length, functional protein may be deactivated via cleavage into N-terminal and C-terminal chains. Mutation of this cleavage site causes autosomal dominant hypophosphatemic rickets (ADHR). Mutations in this gene are also associated with hyperphosphatemic familial tumoral calcinosis (HFTC). [provided by RefSeq, Feb 2013]

Inhibitor · Natural Compounds · Compound Libraries · Recombinant Proteins

This product is for Research Use Only · Not for Human or Veterinary or Therapeutic Use

Tel:781-999-4286 E_mail:info@targetmol.com Address:34 Washington Street,Wellesley Hills,MA 02481