

Anti-FGF-21 Polyclonal Antibody

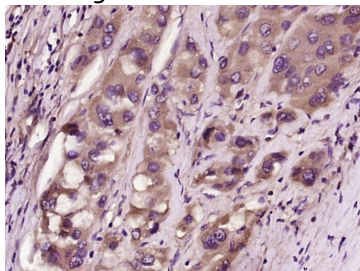
Product Details

Ig Type:	IgG
Reactivity:	Human (predicted:Mouse,Rat)
Molecular Weight:	Theoretical: 20 kDa.
Purification:	Protein A purified

Applications

Verified Activity:

Paraformaldehyde-fixed, paraffin embedded (human liver carcinoma); Antigen retrieval by boiling in sodium citrate buffer (pH6.0) for 15 min; Block endogenous peroxidase by 3% hydrogen peroxide for 20 min; Blocking buffer (normal goat serum) at 37°C for 30 min; Antibody incubation with (FGF21) Polyclonal Antibody, Unconjugated (TMAB-00670) at 1:400 overnight at 4°C, followed by operating according to SP Kit (Rabbit) instructions and DAB staining.



Application:	IF,IHC-Fr,IHC-P
Recommended	IHC-P: 1:100-500; IHC-Fr: 1:100-500; IF: 1:100-500

Properties

Stability & Storage:	Store at -20°C or -80°C for 12 months. Avoid repeated freeze-thaw cycles.
Shipping:	Shipping with blue ice.

Antigen Details

Immunogen:	KLH conjugated synthetic peptide: human FGF21
Antigen Species:	Human
Gene ID:	26291
Uniprot ID:	Q9NSA1
Synonyms:	FGF21;PRO10196;FGF-21;UNQ3115
Biology Area:	FGF,FGF,FGF

Research Background

FGF21 is a growth factor that is a member of the FGF family. Proteins of this family play a central role during prenatal development and postnatal growth and regeneration of a variety of tissues, by promoting cellular proliferation and differentiation. FGF21, in the presence of betaKlotho as a protein cofactor, signals through the FGFR 1c and 4

receptors and stimulates insulin independent glucose uptake by adipocytes.

Inhibitor · Natural Compounds · Compound Libraries · Recombinant Proteins

This product is for Research Use Only · Not for Human or Veterinary or Therapeutic Use

Tel:781-999-4286 E_mail:info@targetmol.com Address:34 Washington Street,Wellesley Hills,MA 02481