

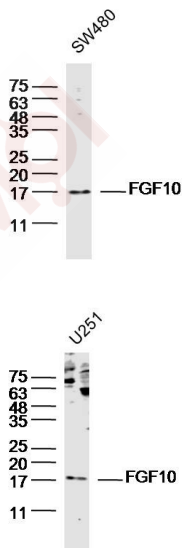
Anti-FGF-10 Polyclonal Antibody

Product Details

Ig Type:	IgG
Reactivity:	Human (predicted:Mouse,Rat,Chicken,Dog,Pig,Cow,Horse,Rabbit,Sheep,GuineaPig)
Molecular Weight:	Theoretical: 23 kDa. Actual: 18 kDa.
Purification:	Protein A purified

Applications

Verified Activity:	1. Sample: SW480 (human) cell Lysate at 40 µg Primary: Anti-FGF10 (TMAB-00668) at 1/300 dilution Secondary: IRDye800CW Goat Anti-RabbitIgG at 1/20000 dilution Predicted band size: 23 kDa Observed band size: 17 kDa
	2. Sample: U251 (human) cell Lysate at 40 µg Primary: Anti-FGF10 (TMAB-00668) at 1/300 dilution Secondary: IRDye800CW Goat Anti-RabbitIgG at 1/20000 dilution Predicted band size: 23 kDa Observed band size: 18 kDa



Application:	WB
Recommended	WB: 1:500-2000

Properties

Stability & Storage:	Store at -20°C or -80°C for 12 months. Avoid repeated freeze-thaw cycles.
Shipping:	Shipping with blue ice.

Antigen Details

Immunogen: KLH conjugated synthetic peptide: human FGF10
Antigen Species: Human
Gene ID: 2255
Uniprot ID: O15520
Synonyms: KGF2;FGF-10
Biology Area: FGF,FGF,FGF,Secreted

Research Background

The protein encoded by this gene is a member of the fibroblast growth factor (FGF) family. FGF family members possess broad mitogenic and cell survival activities, and are involved in a variety of biological processes, including embryonic development, cell growth, morphogenesis, tissue repair, tumor growth and invasion. This protein exhibits mitogenic activity for keratinizing epidermal cells, but essentially no activity for fibroblasts, which is similar to the biological activity of FGF7. Studies of the mouse homolog of suggested that this gene is required for embryonic epidermal morphogenesis including brain development, lung morphogenesis, and initiation of limb bud formation. This gene is also implicated to be a primary factor in the process of wound healing. [provided by RefSeq, Jul 2008]

Inhibitor · Natural Compounds · Compound Libraries · Recombinant Proteins

This product is for Research Use Only · Not for Human or Veterinary or Therapeutic Use

Tel:781-999-4286 E_mail:info@targetmol.com Address:34 Washington Street,Wellesley Hills,MA 02481