

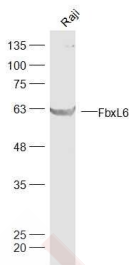
Anti-FbxL6 Polyclonal Antibody

Product Details

Ig Type: IgG
 Reactivity: Human (predicted:Mouse,Rat,Dog,Pig,Horse)
 Molecular Weight: Theoretical: 59 kDa. Actual: 59 kDa.
 Purification: Protein A purified

Applications

Sample:
 Raji (Human) Cell Lysate at 30 µg
 Verified Activity: Primary: Anti-FbxL6 (TMAB-00662) at 1/300 dilution
 Secondary: IRDye800CW Goat Anti-Rabbit IgG at 1/20000 dilution
 Predicted band size: 59 kDa
 Observed band size: 59 kDa



Application: WB
 Recommended WB: 1:500-2000

Properties

Stability & Storage: Store at -20°C or -80°C for 12 months. Avoid repeated freeze-thaw cycles.
 Shipping: Shipping with blue ice.

Antigen Details

Immunogen: KLH conjugated synthetic peptide: human FbxL6
 Antigen Species: Human
 Gene ID: 26233
 Uniprot ID: Q8N531
 Synonyms: FBXL6;FbxL 6;F-box and leucine-rich repeat protein 6;FBL 6;FBL6;F box protein FBL6;F box protein FBL 6;PP 14630;FBL6A;F-box/LRR-repeat protein 6;F box and leucine rich repeat protein 6;FBL 6A;F-box protein FBL6;F box/LRR repeat protein 6;PP14630

Research Background

This gene encodes a member of a family of proteins that are characterized by an F-box motif. The encoded protein also contains leucine-rich repeats. F-box-containing proteins comprise one of the subunits of the SCF (SKP1-cullin-F-box) complex, which functions in phosphorylation-dependent ubiquitination. Alternative splicing results in multiple

transcript variants. [provided by RefSeq, Jul 2013]

Inhibitor · Natural Compounds · Compound Libraries · Recombinant Proteins

This product is for Research Use Only · Not for Human or Veterinary or Therapeutic Use

Tel:781-999-4286 E_mail:info@targetmol.com Address:34 Washington Street,Wellesley Hills,MA 02481