

Anti-FASN Polyclonal Antibody

Product Details

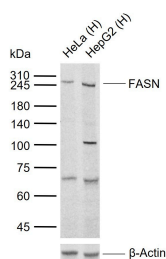
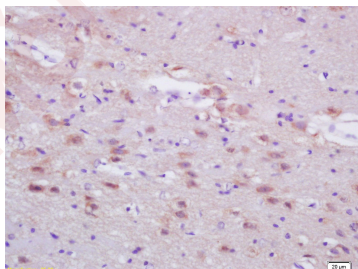
Ig Type: IgG
 Reactivity: Human
 Molecular Weight: Theoretical: 272 kDa. Actual: 250 kDa.
 Purification: Protein A purified

Applications

1. Tissue/cell: rat brain tissue; 4% Paraformaldehyde-fixed and paraffin-embedded; Antigen retrieval: citrate buffer (0.01M, pH6.0), Boiling bathing for 15 min; Block endogenous peroxidase by 3% Hydrogen peroxide for 30 min; Blocking buffer (normal goat serum) at 37°C for 20 min; Incubation: Anti-FASN Polyclonal Antibody, Unconjugated (TMAB-00659) 1:200, overnight at 4° C, followed by conjugation to the secondary antibody and DAb staining.

Verified Activity:

2. Sample:
 Lane 1: Human HeLa cell lysates
 Lane 2: Human HepG2 cell lysates
 Primary: Anti-FASN (TMAB-00659) at 1/1000 dilution
 Secondary: IRDye800CW Goat Anti-Rabbit IgG at 1/20000 dilution
 Predicted band size: 272 kDa
 Observed band size: 250 kDa



Application: ELISA,IF,IHC-Fr,IHC-P,WB

Recommended WB: 1:500-2000; IHC-P: 1:100-500; IHC-Fr: 1:100-500; IF: 1:100-500; ELISA: 1:5000-10000

Properties

Stability & Storage: Store at -20°C or -80°C for 12 months. Avoid repeated freeze-thaw cycles.

Shipping: Shipping with blue ice.

Antigen Details

Immunogen: KLH conjugated synthetic peptide: humanFASN

Antigen Species: Human

Gene ID: 2194

Uniprot ID: P49327

Synonyms: FAS;SDR27X1;fatty acid synthase;OA-519

Biology Area: Integration of energy metabolism, Metabolism of lipids and lipoproteins, Enzymes, Synthesis, Energy Metabolism, Integration of energy, Lipid metabolism, Fatty acid oxidation, Cancer, Obesity, Metabolism, Energy Metabolism, Lipid metabolism

Research Background

FASN (Fatty Acid Synthase) is a central enzyme in de novo lipogenesis. FAS is a target for SREBP and is upregulated by LXR activation; it is also one of the accepted markers for insulin resistance, SREBP and LXR activation.

Inhibitor · Natural Compounds · Compound Libraries · Recombinant Proteins

This product is for Research Use Only · Not for Human or Veterinary or Therapeutic Use

Tel: 781-999-4286 E_mail: info@targetmol.com Address: 34 Washington Street, Wellesley Hills, MA 02481