

Anti-Fas Ligand Polyclonal Antibody

Product Details

Ig Type:	IgG
Reactivity:	Human,Mouse,Rat (predicted:Cow)
Molecular Weight:	Theoretical: 31 kDa. Actual: 40 kDa.
Purification:	Protein A purified

Applications

1. Sample:

Jurkat (Human) Cell Lysate at 30 µg

Primary: Anti-Fas Ligand (TMAB-00655) at 1/1000 dilution

Secondary: IRDye800CW Goat Anti-Rabbit IgG at 1/20000 dilution

Predicted band size: 31 kDa

Observed band size: 40 kDa

2. Tissue/cell: human rectal carcinoma;4% Paraformaldehyde-fixed and paraffin-embedded; Antigen retrieval: citrate buffer (0.01M, pH6.0), Boiling bathing for 15 min; Blocking buffer (normal goat serum) at 37°C for 20 min;

Incubation: Anti-FasL Polyclonal Antibody, Unconjugated (TMAB-00655) 1:200, overnight at 4°C; The secondary antibody was Goat Anti-Rabbit IgG, Cy3 conjugated used at 1:200 dilution for 40 minutes at 37°C. DAPI (5 µg/ml,blue) was used to stain the cell nucleus.

3. Blank control: mouse thymouses (blue)

Isotype Control Antibody: Rabbit Igg (orange);

Secondary Antibody: Goat anti-rabbit IgG-FITC (white blue),

Dilution: 1:100 in 1 X PBS containing 0.5% BSA;

Primary Antibody Dilution: 1 µL in 100 µL 1X PBS containing 0.5% BSA (green).

4. Blank control: Mouse Kidney (blue). Primary Antibody: Rabbit Anti-phospho-Fas Ligand antibody (TMAB-00655,Green); Dilution: 1 µg in 100 µL 1X PBS containing 0.5% BSA; Isotype Control Antibody: Rabbit Igg (orange),used under the same conditions; Secondary Antibody: Goat anti-rabbit IgG-FITC (white blue), Dilution: 1:200 in 1 X PBS containing 0.5% BSA.

Protocol

The cells were fixed with 2% paraformaldehyde for 10 min at 37°C. Primary antibody (TMAB-00655, 1 µg/1x10⁶ cells) were incubated for 30 min at room temperature, followed by 1 X PBS containing 0.5% BSA + 10% goat serum (15 min) to block non-specific protein-protein interactions. Then the Goat Anti-rabbit IgG/FITC antibody was added into the blocking buffer mentioned above to react with the primary antibody at 1/200 dilution for 40 min on ice.

5. Sample: Bone (mouse) Lysate at 40 µg

Primary: Anti-Fas ligand (TMAB-00655) at 1/300 dilution

Secondary: IRDye800CW Goat Anti-Rabbit IgG at 1/20000 dilution

Predicted band size: 31 kDa

Observed band size: 46 kDa

6. Sample:

Lane 1: Bone (Mouse) Lysate at 40 µg

Lane 2: Bone (Rat) Lysate at 40 µg

Primary: Anti-Fas Ligand (TMAB-00655) at 1/1000 dilution

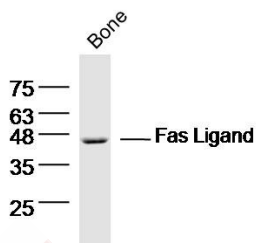
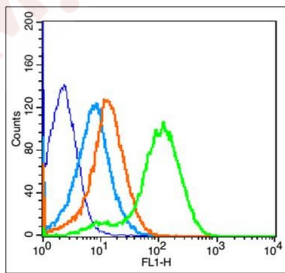
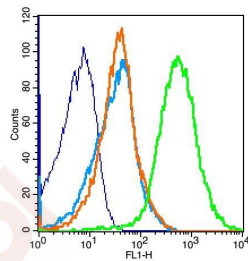
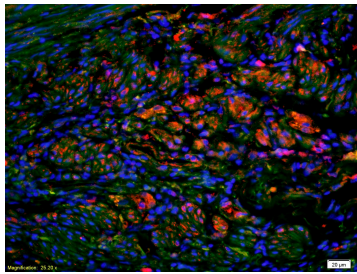
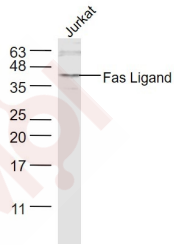
Secondary: IRDye800CW Goat Anti-Rabbit IgG at 1/20000 dilution

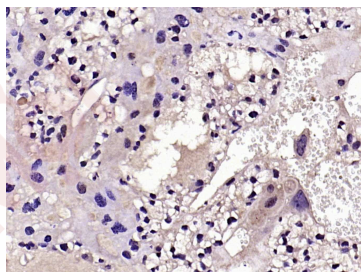
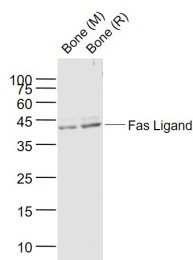
Predicted band size: 40 kDa

Verified Activity:

Observed band size: 40 kDa

7. Paraformaldehyde-fixed, paraffin embedded (mouse placenta); Antigen retrieval by boiling in sodium citrate buffer (pH6.0) for 15 min; Block endogenous peroxidase by 3% hydrogen peroxide for 20 min; Blocking buffer (normal goat serum) at 37°C for 30 min; Antibody incubation with (Fas Ligand) Polyclonal Antibody, Unconjugated (TMAB-00655) at 1:200 overnight at 4°C, followed by operating according to SP Kit (Rabbit) instructions and DAB staining.





Application: FCM,IF,IHC-Fr,IHC-P,WB

Recommended WB: 1:500-2000; IHC-P: 1:100-500; IHC-Fr: 1:100-500; IF: 1:100-500; FCM: 1µg/Test

Properties

Stability & Storage: Store at -20°C or -80°C for 12 months. Avoid repeated freeze-thaw cycles.

Shipping: Shipping with blue ice.

Antigen Details

Immunogen: KLH conjugated synthetic peptide: human Fas Ligand

Antigen Species: Human

Gene ID: 356

Uniprot ID: P48023

Synonyms: CD95-L; APT1LG1; TNLG1A; FASLG; CD178; APTL; FASL; CD95L; Fas ligand; TNFSF6; ALPS1B

Research Background

This gene is a member of the tumor necrosis factor superfamily. The primary function of the encoded transmembrane protein is the induction of apoptosis triggered by binding to FAS. The FAS/FASLG signaling pathway is essential for immune system regulation, including activation-induced cell death (AICD) of T cells and cytotoxic T lymphocyte induced cell death. It has also been implicated in the progression of several cancers. Defects in this gene may be related to some cases of systemic lupus erythematosus (SLE). Alternatively spliced transcript variants have been described. [provided by RefSeq, Nov 2014]

Inhibitor · Natural Compounds · Compound Libraries · Recombinant Proteins

This product is for Research Use Only · Not for Human or Veterinary or Therapeutic Use

Tel: 781-999-4286 E_mail: info@targetmol.com Address: 34 Washington Street, Wellesley Hills, MA 02481