

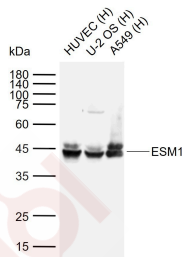
Anti-ESM1 Polyclonal Antibody

Product Details

Ig Type:	IgG
Reactivity:	Human (predicted:Mouse,Rat,Pig,Cow,Horse)
Molecular Weight:	Theoretical: 20 kDa. Actual: 43-47 kDa.
Purification:	Protein A purified

Applications

Sample:	Lane 1: Human HUVEC cell lysates Lane 2: Human U-2 OS cell lysates Lane 3: Human A549 cell lysates
Verified Activity:	Primary: Anti-ESM1 (TMAB-00643) at 1/1000 dilution Secondary: IRDye800CW Goat Anti-Rabbit IgG at 1/20000 dilution Predicted band size: 20 kDa Observed band size: 43-47 kDa



Application:	WB
Recommended	WB: 1:500-2000

Properties

Stability & Storage:	Store at -20°C or -80°C for 12 months. Avoid repeated freeze-thaw cycles.
Shipping:	Shipping with blue ice.

Antigen Details

Immunogen:	KLH conjugated synthetic peptide: human ESM1
Antigen Species:	Human
Gene ID:	11082
Uniprot ID:	Q9NQ30
Synonyms:	endothelial cell-specific molecule 1;endocan
Biology Area:	Epi / Endo-thelial

Research Background

ESM1 is a secreted dermatan sulfate proteoglycan which is predominantly expressed in the endothelial cells in

A DRUG SCREENING EXPERT

human lung and kidney tissues. Expression of ESM1 is regulated by cytokines. ESM1 may have a role in lung endothelial cell-leukocyte interactions. The transcript contains multiple polyadenylation and mRNA instability signals. Two transcript variants encoding different isoforms have been found for this gene.

Inhibitor · Natural Compounds · Compound Libraries · Recombinant Proteins

This product is for Research Use Only · Not for Human or Veterinary or Therapeutic Use

Tel:781-999-4286 E_mail:info@targetmol.com Address:34 Washington Street,Wellesley Hills,MA 02481