

Anti-E-Selectin/CD62E Polyclonal Antibody

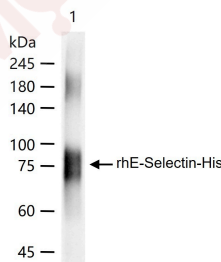
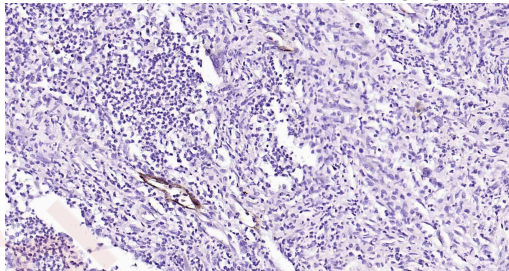
Product Details

Ig Type:	IgG
Reactivity:	Human
Molecular Weight:	Theoretical: 65 kDa. Actual: 65-90 kDa.
Purification:	Protein A purified

Applications

Verified Activity:

1. Paraformaldehyde-fixed, paraffin embedded Human Colon Cancer; Antigen retrieval by boiling in sodium citrate buffer (pH6.0) for 15 min; Antibody incubation with E-Selectin Polyclonal Antibody, Unconjugated (TMAB-00642) at 1:200 overnight at 4°C, followed by conjugation to the SP Kit (Rabbit) and DAB staining.
2. 100 ng rhE-Selectin-His protein per Lane probed with E-Selectin polyclonal antibody respectively, unconjugated (TMAB-00642) at 1:1000 dilution and 4°C overnight incubation. Followed by corresponding conjugated secondary antibody incubation at RT for 60 min.



Application:	IF,IHC-Fr,IHC-P,WB
Recommended	WB: 1:500-2000; IHC-P: 1:100-500; IHC-Fr: 1:100-500; IF: 1:100-500

Properties

Stability & Storage:	Store at -20°C or -80°C for 12 months. Avoid repeated freeze-thaw cycles.
Shipping:	Shipping with blue ice.

Antigen Details

Immunogen:	KLH conjugated synthetic peptide: mouse E-Selectin
Antigen Species:	Mouse
Gene ID:	20339
Uniprot ID:	Q00690
Synonyms:	E-selectin;Sele;CD62E;LECAM2;ELAM-1;Elam
Biology Area:	Endothelial Cell Markers,Cell adhesion molecules,Endothelial Cells,Adhesion,Adhesion molecules ELISA kits,CD markers ELISA kits,Endothelial Markers

Research Background

The protein encoded by this gene is found in cytokine-stimulated endothelial cells and is thought to be responsible for the accumulation of blood leukocytes at sites of inflammation by mediating the adhesion of cells to the vascular lining. It exhibits structural features such as the presence of lectin- and EGF-like domains followed by short consensus repeat (SCR) domains that contain 6 conserved cysteine residues. These proteins are part of the selectin family of cell adhesion molecules. Adhesion molecules participate in the interaction between leukocytes and the endothelium and appear to be involved in the pathogenesis of atherosclerosis. [provided by RefSeq, Jul 2008]

Inhibitor · Natural Compounds · Compound Libraries · Recombinant Proteins

This product is for Research Use Only · Not for Human or Veterinary or Therapeutic Use

Tel:781-999-4286 E_mail:info@targetmol.com Address:34 Washington Street,Wellesley Hills,MA 02481