

Anti-ERVFRD-1 Polyclonal Antibody

Product Details

Ig Type: IgG
Reactivity: Human
Molecular Weight: Theoretical: 21/37/58 kDa. Actual: 60 kDa.
Purification: Protein A purified

Applications

Sample:

Lane 1: Human HeLa cell lysates

Lane 2: Human HepG2 cell lysates

Lane 3: Human A431 cell lysates

Lane 4: Human SH-SY5Y cell lysates

Lane 5: Human A549 cell lysates

Lane 6: Human K562 cell lysates

Lane 7: Human 293T cell lysates

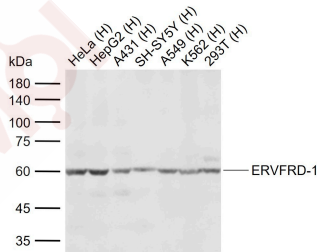
Verified Activity:

Primary: Anti-ERVFRD-1 (TMAB-00640) at 1/1000 dilution

Secondary: IRDye800CW Goat Anti-Rabbit IgG at 1/20000 dilution

Predicted band size: 21/37/58 kDa

Observed band size: 60 kDa



Application: WB

Recommended WB: 1:500-2000

Properties

Stability & Storage: Store at -20°C or -80°C for 12 months. Avoid repeated freeze-thaw cycles.

Shipping: Shipping with blue ice.

Antigen Details

Immunogen:	KLH conjugated synthetic peptide: human HERV-FRD
Antigen Species:	Human
Gene ID:	405754
Uniprot ID:	P60508
Synonyms:	Envelope polyprotein;ERVFRD-1;HERV-FRD;EFRD1;TM;SU;HERV-FRD_6p24.1 provirus ancestral Env polyprotein;ERVFRDE1;UNQ6191/PRO20218;SYCY2;Endogenous retrovirus group FRD member 1
Biology Area:	Other viruses,Other Antibodies

Research Background

Retroviral envelope proteins mediate receptor recognition and membrane fusion during early infection. Endogenous envelope proteins may have kept, lost or modified their original function during evolution. This endogenous envelope protein has retained its original fusogenic properties. Can make pseudotypes with MLV, HIV-1 or SIV-1 virions and confer infectivity. SU mediates receptor recognition (By similarity). TM anchors the envelope heterodimer to the viral membrane through one transmembrane domain. The other hydrophobic domain, called fusion peptide, mediates fusion of the viral membrane with the target cell membrane (By similarity).

Inhibitor · Natural Compounds · Compound Libraries · Recombinant Proteins

This product is for Research Use Only · Not for Human or Veterinary or Therapeutic Use

Tel:781-999-4286 E_mail:info@targetmol.com Address:34 Washington Street,Wellesley Hills,MA 02481