

Anti-ERK1/2 Antibody (4U909)

Product Details

Ig Type:	IgG
Reactivity:	Human,Mouse,Rat
Molecular Weight:	Theoretical: 43 kDa. Actual: 44,42 kDa.
Clone:	4U909
Purification:	Protein G purified

Applications

1. Paraformaldehyde-fixed, paraffin embedded (mouse brain); Antigen retrieval by boiling in sodium citrate buffer (pH6.0) for 15 min; Block endogenous peroxidase by 3% hydrogen peroxide for 20 min; Blocking buffer (normal goat serum) at 37°C for 30 min; Antibody incubation with (ERK1) Monoclonal Antibody, Unconjugated (ascites of TMAB-00636) at 1:2000 overnight at 4°C, followed by operating according to SP Kit (Mouse) instructions and DAB staining.

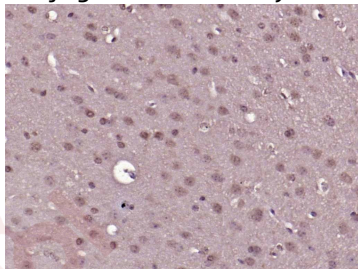
2. Paraformaldehyde-fixed, paraffin embedded (mouse brain); Antigen retrieval by boiling in sodium citrate buffer (pH6.0) for 15 min; Block endogenous peroxidase by 3% hydrogen peroxide for 20 min; Blocking buffer (normal goat serum) at 37°C for 30 min; Antibody incubation with (ERK1) Monoclonal Antibody, Unconjugated (ascites of TMAB-00636) at 1:2000 overnight at 4°C, followed by operating according to SP Kit (Mouse) instructions and DAB staining.

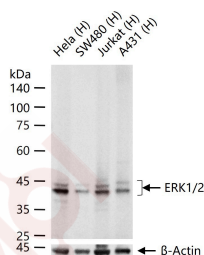
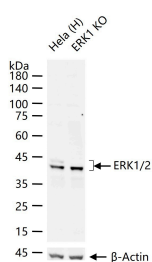
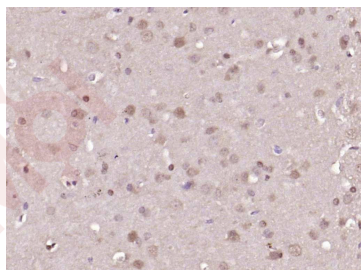
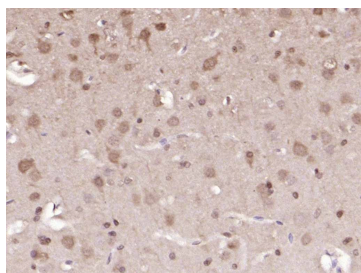
Verified Activity:

3. Paraformaldehyde-fixed, paraffin embedded (rat brain); Antigen retrieval by boiling in sodium citrate buffer (pH6.0) for 15 min; Block endogenous peroxidase by 3% hydrogen peroxide for 20 min; Blocking buffer (normal goat serum) at 37°C for 30 min; Antibody incubation with (ERK1) Monoclonal Antibody, Unconjugated (ascites of TMAB-00636) at 1:2000 overnight at 4°C, followed by operating according to SP Kit (Mouse) instructions and DAB staining.

4. 25 µg total protein per Lane of various lysates probed with ERK1/2 monoclonal antibody, unconjugated (TMAB-00636) at 1:1000 dilution and 4°C overnight incubation. Followed by conjugated secondary antibody incubation at RT for 60 min.

5. 25 µg total protein per Lane of various lysates probed with ERK1/2 monoclonal antibody, unconjugated (TMAB-00636) at 1:500 dilution and 4°C overnight incubation. Followed by conjugated secondary antibody incubation at RT for 60 min.





Application: FCM,IF,IHC-Fr,IHC-P,WB

Recommended FCM=1 µg/Test; IF=1:500-2000; IHC-Fr=1:500-2000; IHC-P=1:500-2000; WB=1:500-5000

Properties

Stability & Storage: Store at -20°C or -80°C for 12 months. Avoid repeated freeze-thaw cycles.

Shipping: Shipping with blue ice.

Antigen Details

Immunogen: KLH conjugated synthetic peptide: human ERK1/2

Antigen Species: Human

Gene ID: 5594

Uniprot ID: P27361

Synonyms: Protein kinase mitogen activated 2;p44MAPK;p42MAPK;ERK 1;PRKM 3;MGC20180;Protein kinase mitogen activated 1;MAPK 2;p38;p44 ERK1;MK01;p41;ERT2;MAP kinase 2;MAPK 3;p42-MAPK;PRKM1;MAPK 1;ERT1;Protein kinase mitogen activated 3;MAPK3;ERK 2;MAP kinase isoform p44;ERK1;Microtubule associated protein 2 kinase;PRKM3;MAPK2;ERK2;MAP kinase 1;MAPK1;p40;Mitogen activated protein kinase 2;HUMKER1A;Insulin stimulated MAP2 kinase;

PRKM2;PRKM 2;PRKM 1;Extracellular signal-regulated kinase 2;MAP kinase isoform p42;p44 MAPK;Extracellular signal regulated kinase 1;Extracellular signal regulated kinase 2;ERK-2;ERK 1/2;Mitogen activated protein kinase 1;Mitogen activated protein kinase 3;HS44KDAP;Protein tyrosine kinase ERK 2;p44ERK1;MK03;p42 MAPK

Biology Area: Tangles & Tau,MAPK Pathway,Cytoplasmic

Research Background

The protein encoded by this gene is a member of the MAPkinase family. MAP kinases, also known as extracellular signal-regulated kinases (ERKs), act in a signaling cascade that regulates various cellular processes such as proliferation, differentiation, and cell cycle progression in response to a variety of extracellular signals. This kinase is activated by upstream kinases, resulting in its translocation to the nucleus where it phosphorylates nuclear targets. Alternatively spliced transcript variants encoding different protein isoforms have been described. [provided by RefSeq, Jul 2008].

Inhibitor · Natural Compounds · Compound Libraries · Recombinant Proteins

This product is for Research Use Only · Not for Human or Veterinary or Therapeutic Use

Tel: 781-999-4286 E_mail: info@targetmol.com Address: 34 Washington Street, Wellesley Hills, MA 02481