

## Anti-ERK1/2 Polyclonal Antibody 2

### Product Details

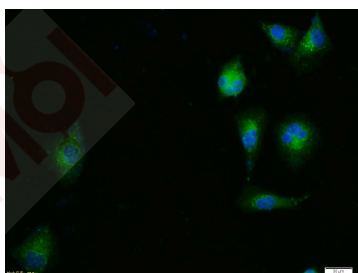
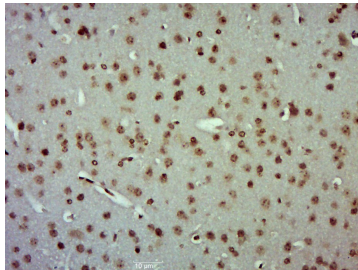
Ig Type:	IgG
Reactivity:	Human, Mouse, Rat (predicted: Chicken, Dog, Pig, Cow, Horse, Rabbit, Sheep, Goat)
Molecular Weight:	Theoretical: 42/44 kDa. Actual: 38 kDa.
Purification:	Protein A purified

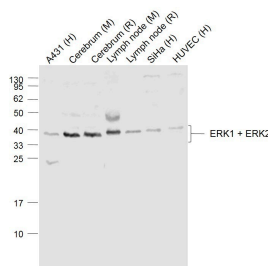
### Applications

1. Paraformaldehyde-fixed, paraffin embedded (Mouse brain); Antigen retrieval by boiling in sodium citrate buffer (pH6.0) for 15 min; Block endogenous peroxidase by 3% hydrogen peroxide for 20 min; Blocking buffer (normal goat serum) at 37°C for 30 min; Antibody incubation with (ERK1 + ERK2) Polyclonal Antibody, Unconjugated (TMAB-00634) at 1:500 overnight at 4°C, followed by a conjugated secondary for 20 min and DAB staining.
2. Tissue/cell: HUVEC cell; 4% Paraformaldehyde-fixed; Triton X-100 at room temperature for 20 min; Blocking buffer (normal goat serum) at 37°C for 20 min; Antibody incubation with (ERK1 + ERK2) Polyclonal Antibody, Unconjugated (TMAB-00634) 1:100, 90 minutes at 37°C; followed by a conjugated Goat Anti-Rabbit IgG antibody at 37°C for 90 minutes, DAPI (blue) was used to stain the cell nucleus.

### Verified Activity:

3. Sample:
    - Lane 1: A431 (Human) Cell Lysate at 30 µg
    - Lane 2: Cerebrum (Mouse) Lysate at 40 µg
    - Lane 3: Cerebrum (Rat) Lysate at 40 µg
    - Lane 4: Lymphnode (Mouse) Lysate at 40 µg
    - Lane 5: Lymphnode (Rat) Lysate at 40 µg
    - Lane 6: SiHa (Human) Cell Lysate at 30 µg
    - Lane 7: HUVEC (Human) Cell Lysate at 30 µg
- Primary: Anti-ERK1 + ERK2 (TMAB-00634) at 1/1000 dilution  
Secondary: IRDye800CW Goat Anti-Rabbit IgG at 1/20000 dilution  
Predicted band size: 44/42 kDa  
Observed band size: 38 kDa





Application: FCM,ICC/IF,IF,IHC-Fr,IHC-P,WB

Recommended FCM=1 µg/Test; ICC/IF=1:50-200; IF=1:100-500; IHC-Fr=1:100-500; IHC-P=1:100-500; WB=1:1000-5000

### Properties

Stability & Storage: Store at -20°C or -80°C for 12 months. Avoid repeated freeze-thaw cycles.

Shipping: Shipping with blue ice.

### Antigen Details

Immunogen: KLH conjugated synthetic peptide: human ERK1/2

Antigen Species: Human

Gene ID: 5594

Uniprot ID: P27361

Synonyms: p41;PRKM 3;p42 MAPK;MAPK2;Protein kinase mitogen activated 2;MK01;ERK 2;Microtubule associated protein 2 kinase;p44 MAPK;Insulin stimulated MAP2 kinase;PRKM2;p44 ERK1;MAP kinase 2;p42MAPK;MAPK 3;MAPK 1;ERK-2;MAPK1;Extracellular signal-regulated kinase 2; Protein kinase mitogen activated 3;Protein kinase mitogen activated 1;Mitogen activated protein kinase 1;MAP kinase isoform p44;MAPK3;p41mapk;ERK 1/2;Protein tyrosine kinase ERK 2;ERK1;MAPK 2;PRKM1;ERK2;MAP kinase 1;MK03;MAP kinase isoform p42;Extracellular signal regulated kinase 2;HUMKER1A;Extracellular signal regulated kinase 1;PRKM 2;p42-MAPK; PRKM3;p38;Mitogen activated protein kinase 3;Mitogen activated protein kinase 2;p40; p44MAPK;MGC20180;HS44KDAP;ERT1;p44ERK1;ERT2;PRKM 1;ERK 1

Biology Area: Tangles & Tau,MAPK Pathway,Cytoplasmic

### Research Background

The protein encoded by this gene is a member of the MAPkinase family. MAP kinases, also known as extracellular signal-regulated kinases (ERKs), act in a signaling cascade that regulates various cellular processes such as proliferation, differentiation, and cell cycle progression in response to a variety of extracellular signals. This kinase is activated by upstream kinases, resulting in its translocation to the nucleus where it phosphorylates nuclear targets. Alternatively spliced transcript variants encoding different protein isoforms have been described. [provided by RefSeq, Jul 2008].

**Inhibitor · Natural Compounds · Compound Libraries · Recombinant Proteins**

This product is for Research Use Only · Not for Human or Veterinary or Therapeutic Use

Tel:781-999-4286 E\_mail:info@targetmol.com Address:34 Washington Street,Wellesley Hills,MA 02481