

Anti-ER beta Polyclonal Antibody

Product Details

Ig Type:	IgG
Reactivity:	Human,Mouse,Rat
Molecular Weight:	Theoretical: 58 kDa. Actual: 63 kDa.
Purification:	Protein A purified

Applications

1. Sample:
Kidney (Mouse) lysate at 30 µg;
Brain (Rat) lysate at 30 µg;
Primary: Anti-ER-beta (TMAB-00632) at 1:200;
Secondary: HRP conjugated Goat Anti-Rabbit IgG (secondary antibody) at 1: 3000;
Predicted band size: 58 kDa
Observed band size: 58 kDa
2. Sample:
Lane 1: Testis (Mouse) Lysate at 40 µg
Lane 2: Testis (Rat) Lysate at 40 µg
Lane 3: Ovary (Mouse) Lysate at 40 µg
Lane 4: Uterus (Mouse) Lysate at 40 µg
Lane 5: Uterus (Rat) Lysate at 40 µg
Primary: Anti-Estrogen receptor beta (TMAB-00632) at 1/1000 dilution
Secondary: IRDye800CW Goat Anti-Rabbit IgG at 1/20000 dilution
Predicted band size: 58 kDa
Observed band size: 58-62 kDa
3. Paraformaldehyde-fixed, paraffin embedded Rat Testicles; Antigen retrieval by boiling in sodium citrate buffer (pH6.0) for 15 min; Antibody incubation with ESR2 Polyclonal Antibody, Unconjugated (TMAB-00632) at 1:200 overnight at 4°C, followed by conjugation to the SP Kit (Rabbit) and DAB staining.
4. Paraformaldehyde-fixed, paraffin embedded Rat Ovary; Antigen retrieval by boiling in sodium citrate buffer (pH6.0) for 15 min; Antibody incubation with ESR2 Polyclonal Antibody, Unconjugated (TMAB-00632) at 1:200 overnight at 4°C, followed by conjugation to the SP Kit (Rabbit) and DAB staining.
5. Paraformaldehyde-fixed, paraffin embedded Rat Cerebrum; Antigen retrieval by boiling in sodium citrate buffer (pH6.0) for 15 min; Antibody incubation with ESR2 Polyclonal Antibody, Unconjugated (TMAB-00632) at 1:200 overnight at 4°C, followed by conjugation to the SP Kit (Rabbit) and DAB staining.
6. Paraformaldehyde-fixed, paraffin embedded Mouse Cerebrum; Antigen retrieval by boiling in sodium citrate buffer (pH6.0) for 15 min; Antibody incubation with ESR2 Polyclonal Antibody, Unconjugated (TMAB-00632) at 1:200 overnight at 4°C, followed by conjugation to the SP Kit (Rabbit) and DAB staining.
7. Paraformaldehyde-fixed, paraffin embedded Rat Breast; Antigen retrieval by boiling in sodium citrate buffer (pH6.0) for 15 min; Antibody incubation with ESR2 Polyclonal Antibody, Unconjugated (TMAB-00632) at 1:200 overnight at 4°C, followed by conjugation to the SP Kit (Rabbit) and DAB staining.
8. Paraformaldehyde-fixed, paraffin embedded Rat Cerebellum; Antigen retrieval by boiling in
- Verified Activity:

sodium citrate buffer (pH6.0) for 15 min; Antibody incubation with ESR2 Polyclonal Antibody, Unconjugated (TMAB-00632) at 1:200 overnight at 4°C, followed by conjugation to the SP Kit (Rabbit) and DAB staining.

9. Paraformaldehyde-fixed, paraffin embedded Mouse Cerebellum; Antigen retrieval by boiling in sodium citrate buffer (pH6.0) for 15 min; Antibody incubation with ESR2 Polyclonal Antibody, Unconjugated (TMAB-00632) at 1:200 overnight at 4°C, followed by conjugation to the SP Kit (Rabbit) and DAB staining.

10. Paraformaldehyde-fixed, paraffin embedded Human Breast; Antigen retrieval by boiling in sodium citrate buffer (pH6.0) for 15 min; Antibody incubation with ESR2 Polyclonal Antibody, Unconjugated (TMAB-00632) at 1:200 overnight at 4°C, followed by conjugation to the SP Kit (Rabbit) and DAB staining.

11. Paraformaldehyde-fixed, paraffin embedded Human Cervical Cancer; Antigen retrieval by boiling in sodium citrate buffer (pH6.0) for 15 min; Antibody incubation with ESR2 Polyclonal Antibody, Unconjugated (TMAB-00632) at 1:200 overnight at 4°C, followed by conjugation to the SP Kit (Rabbit) and DAB staining.

12. Paraformaldehyde-fixed, paraffin embedded Human Colon Cancer; Antigen retrieval by boiling in sodium citrate buffer (pH6.0) for 15 min; Antibody incubation with ESR2 Polyclonal Antibody, Unconjugated (TMAB-00632) at 1:200 overnight at 4°C, followed by conjugation to the SP Kit (Rabbit) and DAB staining.

13. Sample:

Lane 1: Mouse Testis tissue lysates

Lane 2: Mouse Cerebrum tissue lysates

Lane 3: Mouse Cerebellum tissue lysates

Lane 4: Rat Testis tissue lysates

Lane 5: Rat Cerebrum tissue lysates

Lane 6: Rat Cerebellum tissue lysates

Lane 7: Human MCF-7 cell lysates

Lane 8: Human Jurkat cell lysates

Lane 9: Human U-2 OS cell lysates

Lane 10: Human A431 cell lysates

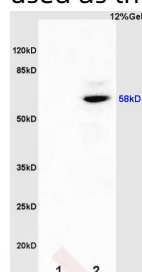
Primary: Anti-ESR2 (TMAB-00632) at 1/1000 dilution

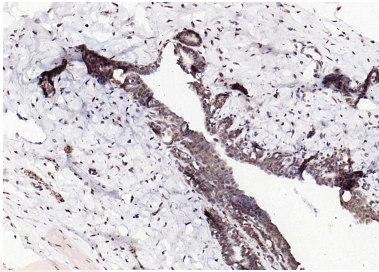
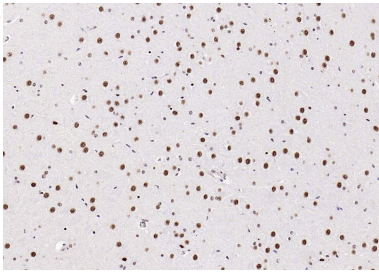
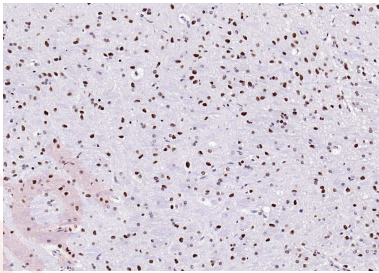
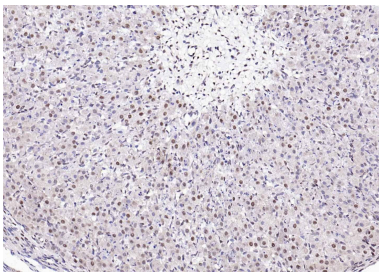
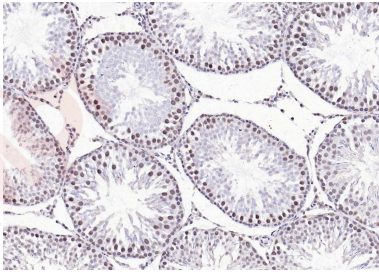
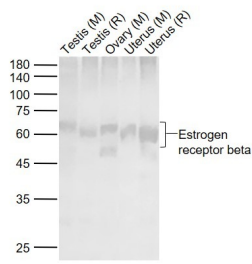
Secondary: IRDye800CW Goat Anti-Rabbit IgG at 1/20000 dilution

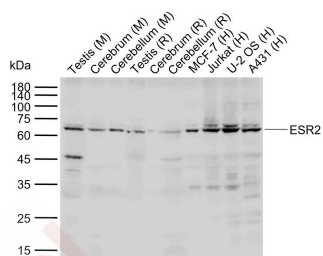
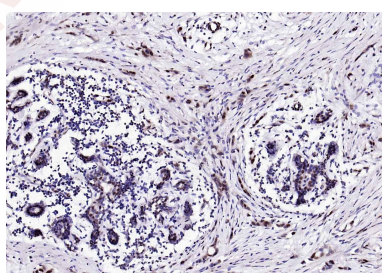
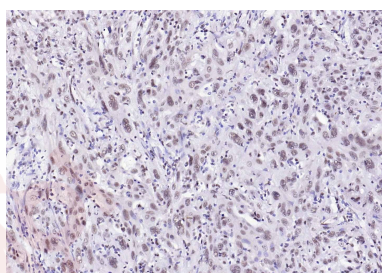
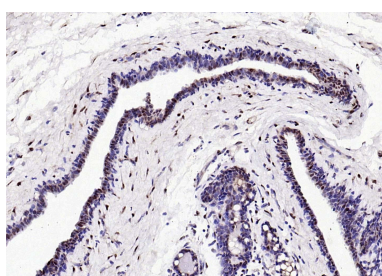
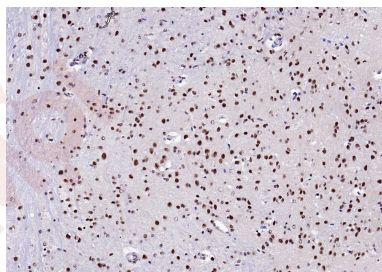
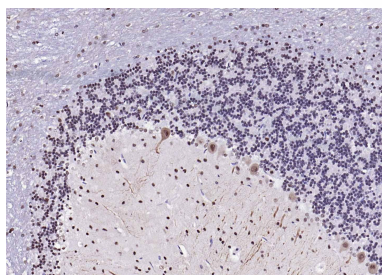
Predicted band size: 58 kDa

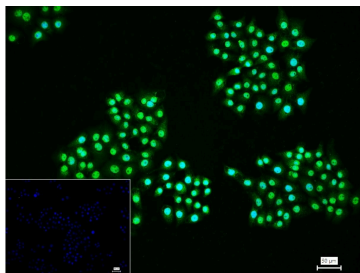
Observed band size: 63 kDa

14. 4% Paraformaldehyde-fixed MCF-7 (H) cell; Triton X-100 at RT for 20 min; Antibody incubation with (Estrogen Receptor beta) polyclonal Antibody, unconjugated (TMAB-00632) 1:100, 90 min at 37°C; followed by conjugated Goat Anti-Rabbit IgG antibody (green) at 37°C for 90 min, DAPI (blue) was used to stain the cell nucleus. PBS instead of the primary antibody was used as the blank control.









Application: ELISA, ICC/IF, IHC-Fr, IHC-P, WB

Recommended WB: 1:500-2000; IHC-P: 1:400-800; IHC-Fr: 1:400-800; ICC/IF: 1:50-200; IF: 1:100-500; ELISA: 1:5000-10000

Properties

Stability & Storage: Store at -20°C or -80°C for 12 months. Avoid repeated freeze-thaw cycles.

Shipping: Shipping with blue ice.

Antigen Details

Immunogen: KLH conjugated synthetic peptide: human ER-beta

Antigen Species: Human

Gene ID: 2100

Uniprot ID: Q92731

Synonyms: ESTRB; NR3A2; Estrogen receptor beta; ESR2; ER-beta; Nuclear receptor subfamily 3 group A member 2

Biology Area: Estrogen, Receptors, CHIP kits, Estrogen, Zinc Finger, Gonadotrophic axis, Estrogen

Research Background

This gene encodes a member of the family of estrogen receptors and superfamily of nuclear receptor transcription factors. The gene product contains an N-terminal DNA binding domain and C-terminal ligand binding domain and is localized to the nucleus, cytoplasm, and mitochondria. Upon binding to 17beta-estradiol or related ligands, the encoded protein forms homo- or hetero-dimers that interact with specific DNA sequences to activate transcription. Some isoforms dominantly inhibit the activity of other estrogen receptor family members. Several alternatively spliced transcript variants of this gene have been described, but the full-length nature of some of these variants has not been fully characterized. [provided by RefSeq, Jul 2008].

Inhibitor · Natural Compounds · Compound Libraries · Recombinant Proteins

This product is for Research Use Only · Not for Human or Veterinary or Therapeutic Use

Tel: 781-999-4286 E_mail: info@targetmol.com Address: 34 Washington Street, Wellesley Hills, MA 02481