

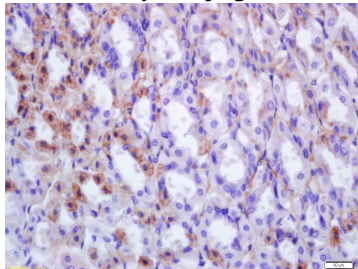
Anti-EPX Polyclonal Antibody

Product Details

Ig Type:	IgG
Reactivity:	Mouse (predicted:Human,Rat)
Molecular Weight:	Theoretical: 79 kDa.
Purification:	Protein A purified

Applications

Verified Activity: Tissue/cell: mouse stomach tissue; 4% Paraformaldehyde-fixed and paraffin-embedded; Antigen retrieval: citrate buffer (0.01M, pH6.0), Boiling bathing for 15 min; Block endogenous peroxidase by 3% Hydrogen peroxide for 30 min; Blocking buffer (normal goat serum) at 37°C for 20 min; Incubation: Anti-EPX Polyclonal Antibody, Unconjugated (TMAB-00629) 1:200, overnight at 4°C, followed by conjugation to the secondary antibody and DAb staining.



Application:	IF,IHC-Fr,IHC-P
Recommended	IHC-P: 1:100-500; IHC-Fr: 1:100-500; IF: 1:100-500

Properties

Stability & Storage:	Store at -20°C or -80°C for 12 months. Avoid repeated freeze-thaw cycles.
Shipping:	Shipping with blue ice.

Antigen Details

Immunogen:	KLH conjugated synthetic peptide: human Eosinophil peroxidase heavy chain
Antigen Species:	Human
Gene ID:	8288
Synonyms:	EPP;PERE;EPX PEN;Eosinophil peroxidase heavy chain;EPER;EPO;Eosinophil peroxidase
Biology Area:	Neutrophil Lineage,Cellular metabolic process

Research Background

EPX, eosinophil peroxidase, is an antimycobacterial protein that localizes to cytoplasmic granules of eosinophils and recruits bromide to generate a halogenating oxidant. EPX dependent generation of hypobromous acid causes damage to tissue during inflammatory conditions that include asthma, allergies,cancer and parasitic/helminthic infections. EPX is a major enzyme present in eosinophils and upon degranulation, becomes released into the

A DRUG SCREENING EXPERT

airways of asthmatics. As a result of its cationic nature and its ability to catalyze the formation of highly toxic oxidants, EPX can induce lung injury in a JNK dependent manner.

Inhibitor · Natural Compounds · Compound Libraries · Recombinant Proteins

This product is for Research Use Only · Not for Human or Veterinary or Therapeutic Use

Tel:781-999-4286 E_mail:info@targetmol.com Address:34 Washington Street,Wellesley Hills,MA 02481