

Anti-EPO/Erythropoietin Polyclonal Antibody

Product Details

Ig Type:	IgG
Reactivity:	Human,Rat (predicted:Mouse,Dog,Pig,Cow,Horse,Rabbit,Sheep)
Molecular Weight:	Theoretical: 28 kDa. Actual: 33 kDa.
Purification:	Protein A purified

Applications

1. Tissue/cell: Rat kidney tissue; 4% Paraformaldehyde-fixed and paraffin-embedded; Antigen retrieval: citrate buffer (0.01M, pH6.0), Boiling bathing for 15 min; Block endogenous peroxidase by 3% Hydrogen peroxide for 30 min; Blocking buffer (normal goat serum) at 37°C for 20 min; Incubation: Anti-EPO Polyclonal Antibody, Unconjugated (TMAB-00627) 1:200, overnight at 4°C, followed by conjugation to the secondary antibody and DAB staining.

Verified Activity:

2. Sample:

Lane 1: Rat Liver tissue lysates

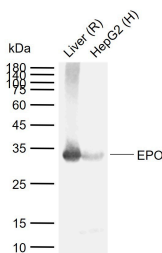
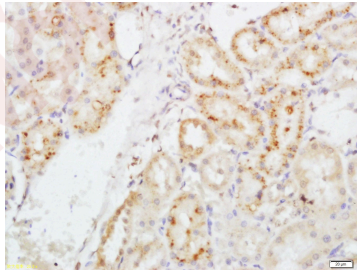
Lane 2: Human HepG2 cell lysates

Primary: Anti-EPO (TMAB-00627) at 1/1000 dilution

Secondary: IRDye800CW Goat Anti-Rabbit IgG at 1/20000 dilution

Predicted band size: 28 kDa

Observed band size: 33 kDa



Application: IF,IHC-Fr,IHC-P,WB

Recommended WB: 1:500-2000; IHC-P: 1:100-500; IHC-Fr: 1:100-500; IF: 1:100-500

Properties

Stability & Storage: Store at -20°C or -80°C for 12 months. Avoid repeated freeze-thaw cycles.

Shipping: Shipping with blue ice.

Antigen Details

Immunogen: KLH conjugated synthetic peptide: human Erythropoietin

Antigen Species: Human

Gene ID: 2056

Uniprot ID: P01588

Synonyms: Erythropoietin;EPO;Epoetin

Biology Area: Response to hypoxia,Growth Factors,Erythrocytes,Hematopoietic system development,ChIP kits,
Hypoxia,Hormones,Intracellular Molecules

Research Background

Human erythropoietin is member of the EPO/TPO family and encodes a secreted, glycosylated cytokine hormone composed of four alpha helical bundles. The protein is found in the plasma and regulates red cell production by promoting erythroid differentiation and initiating hemoglobin synthesis. This protein also has neuroprotective activity against a variety of potential brain injuries and antiapoptotic functions in several tissue types. It is produced by kidney or liver of adult mammals and by liver of fetal or neonatal mammals.

Inhibitor · Natural Compounds · Compound Libraries · Recombinant Proteins

This product is for Research Use Only· Not for Human or Veterinary or Therapeutic Use

Tel:781-999-4286 E_mail:info@targetmol.com Address:34 Washington Street,Wellesley Hills,MA 02481