

## Anti-EphB2 Polyclonal Antibody

### Product Details

Ig Type:	IgG
Reactivity:	Rat,Mouse,Human (predicted:Dog,Chicken)
Molecular Weight:	Theoretical: 114 kDa. Actual: 120 kDa.
Purification:	Protein A purified

### Applications

1. Tissue/cell: human lung carcinoma; 4% Paraformaldehyde-fixed and paraffin-embedded; Antigen retrieval: citrate buffer (0.01M, pH6.0), Boiling bathing for 15 min; Block endogenous peroxidase by 3% Hydrogen peroxide for 30 min; Blocking buffer (normal goat serum) at 37°C for 20 min;

Incubation: Anti-EphB2 R Polyclonal Antibody, Unconjugated (TMAB-00625) 1:500, overnight at 4°C, followed by conjugation to the secondary antibody and DAb staining.

2. Tissue/cell: human colon carcinoma; 4% Paraformaldehyde-fixed and paraffin-embedded; Antigen retrieval: citrate buffer (0.01M, pH6.0), Boiling bathing for 15 min; Block endogenous peroxidase by 3% Hydrogen peroxide for 30 min; Blocking buffer (normal goat serum) at 37°C for 20 min;

Incubation: Anti-EphB2 R Polyclonal Antibody, Unconjugated (TMAB-00625) 1:500, overnight at 4°C, followed by conjugation to the secondary antibody and DAb staining.

Verified Activity:

3. Sample:

Lane 1: Testis (Mouse) Lysate at 40 µg

Lane 2: Testis (Rat) Lysate at 40 µg

Lane 3: Huvec (Human) Cell Lysate at 30 µg

Lane 4: U251 (Human) Cell Lysate at 30 µg

Lane 5: A431 (Human) Cell Lysate at 30 µg

Lane 6: U2os (Human) Cell Lysate at 30 µg

Lane 7: MDA-MB-231 (Human) Cell Lysate at 30 µg

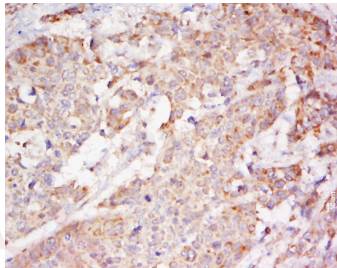
Lane 8: K562 (Human) Cell Lysate at 30 µg

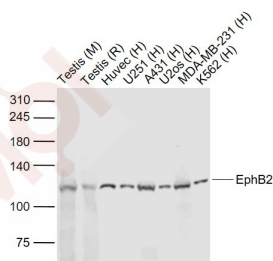
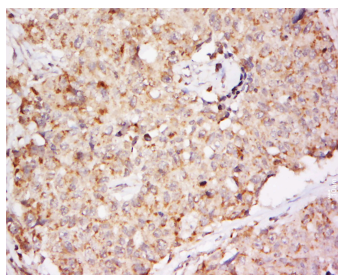
Primary: Anti-EphB2 (TMAB-00625) at 1/1000 dilution

Secondary: IRDye800CW Goat Anti-Rabbit IgG at 1/20000 dilution

Predicted band size: 125 kDa

Observed band size: 120 kDa





Application: IF,IHC-Fr,IHC-P,WB

Recommended WB: 1:500-2000; IHC-P: 1:100-500; IHC-Fr: 1:100-500; IF: 1:100-500

### Properties

Stability & Storage: Store at -20°C or -80°C for 12 months. Avoid repeated freeze-thaw cycles.

Shipping: Shipping with blue ice.

### Antigen Details

Immunogen: KLH conjugated synthetic peptide: human EphB2

Antigen Species: Human

Gene ID: 2048

Uniprot ID: P29323

Synonyms: EPH receptor B2;ERK;DRT;Hek5;PCBC;EK5;Tyro5;CAPB;EPHT3

Biology Area: Eph Receptors,Growth Cone,Axonal Guidance Proteins,Kinases,Tyrosine Kinase Receptors, Receptor Tyrosine Kinases

### Research Background

This gene encodes a member of the Eph receptor family of receptor tyrosine kinase transmembrane glycoproteins. These receptors are composed of an N-terminal glycosylated ligand-binding domain, a transmembrane region and an intracellular kinase domain. They bind ligands called ephrins and are involved in diverse cellular processes including motility, division, and differentiation. A distinguishing characteristic of Eph-ephrin signaling is that both receptors and ligands are competent to transduce a signaling cascade, resulting in bidirectional signaling. This protein belongs to a subgroup of the Eph receptors called EphB. Proteins of this subgroup are distinguished from other members of the family by sequence homology and preferential binding affinity for membrane-bound ephrin-B ligands. Allelic variants are associated with prostate and brain cancer susceptibility. Alternative splicing results in multiple transcript variants. [provided by RefSeq, May 2015]

**Inhibitor · Natural Compounds · Compound Libraries · Recombinant Proteins**

This product is for Research Use Only · Not for Human or Veterinary or Therapeutic Use

Tel:781-999-4286 E\_mail:info@targetmol.com Address:34 Washington Street,Wellesley Hills,MA 02481