

## Anti-EphA2 Polyclonal Antibody

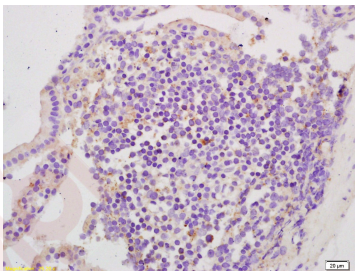
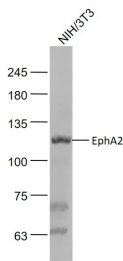
### Product Details

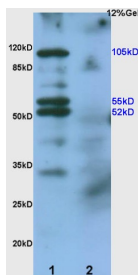
Ig Type:	IgG
Reactivity:	Mouse (predicted:Human,Rat,Dog,Cow,Monkey)
Molecular Weight:	Theoretical: 105 kDa. Actual: 115 kDa.
Purification:	Protein A purified

### Applications

1. Sample:  
NIH/3T3 (Mouse) Cell Lysate at 30  $\mu$ g  
Primary: Anti-EphA2 (TMAB-00624) at 1/1000 dilution  
Secondary: IRDye800CW Goat Anti-Rabbit IgG at 1/20000 dilution  
Predicted band size: 105 kDa  
Observed band size: 115 kDa
2. Tissue/cell: mouse intestine tissue; 4% Paraformaldehyde-fixed and paraffin-embedded;  
Antigen retrieval: citrate buffer (0.01M, pH6.0), Boiling bathing for 15 min; Block endogenous peroxidase by 3% Hydrogen peroxide for 30 min; Blocking buffer (normal goat serum) at 37°C for 20 min;  
Incubation: Anti-EphA2/EpHreceptor A2 Polyclonal Antibody, Unconjugated (TMAB-00624) 1:200, overnight at 4°C, followed by conjugation to the secondary antibody and DAb staining.
3. Sample:  
Human colon carcinoma lysates Lysate at 30  $\mu$ g  
Intestine (Mouse) Lysate at 30  $\mu$ g  
Primary: Anti-EphA2/EpHreceptor A2 (TMAB-00624) at 1/200 dilution  
Secondary: HRP conjugated Goat-Anti-rabbit IgG (secondary antibody) at 1/3000 dilution  
Predicted band size: 105 kDa  
Observed band size: 105 kDa, 52/55 kDa

Verified Activity:





Application: IF,IHC-Fr,IHC-P,WB

Recommended WB: 1:500-2000; IHC-P: 1:100-500; IHC-Fr: 1:100-500; IF: 1:100-500

### Properties

Stability & Storage: Store at -20°C or -80°C for 12 months. Avoid repeated freeze-thaw cycles.

Shipping: Shipping with blue ice.

### Antigen Details

Immunogen: KLH conjugated synthetic peptide: human EphA2

Antigen Species: Human

Gene ID: 1969

Uniprot ID: P29317

Synonyms: Eck;EPH receptor A2;Myk2;AW545284;Sek-2;Sek2

Biology Area: Eph Receptors,Growth Cone,Axonal Guidance Proteins,Kinases,Tyrosine Kinase Receptors

### Research Background

This gene belongs to the ephrin receptor subfamily of the protein-tyrosine kinase family. EPH and EPH-related receptors have been implicated in mediating developmental events, particularly in the nervous system. Receptors in the EPH subfamily typically have a single kinase domain and an extracellular region containing a Cys-rich domain and 2 fibronectin type III repeats. The ephrin receptors are divided into 2 groups based on the similarity of their extracellular domain sequences and their affinities for binding ephrin-A and ephrin-B ligands. This gene encodes a protein that binds ephrin-A ligands. Mutations in this gene are the cause of certain genetically-related cataract disorders.[provided by RefSeq, May 2010].

**Inhibitor · Natural Compounds · Compound Libraries · Recombinant Proteins**

This product is for Research Use Only · Not for Human or Veterinary or Therapeutic Use

Tel:781-999-4286 E\_mail:info@targetmol.com Address:34 Washington Street,Wellesley Hills,MA 02481