

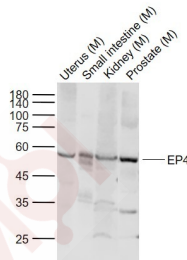
Anti-EP4 Polyclonal Antibody

Product Details

Ig Type: IgG
 Reactivity: Mouse
 Molecular Weight: Theoretical: 53 kDa. Actual: 55 kDa.
 Purification: Protein A purified

Applications

Sample:
 Lane 1: Mouse Uterus tissue lysates
 Lane 2: Mouse Small intestine tissue lysates
 Lane 3: Mouse Kidney tissue lysates
 Lane 4: Mouse Prostate tissue lysates
 Verified Activity:
 Primary: Anti-EP4 (TMAB-00621) at 1/1000 dilution
 Secondary: IRDye800CW Goat Anti-Rabbit IgG at 1/20000 dilution
 Predicted band size: 53 kDa
 Observed band size: 55 kDa



Application: FCM,WB
 Recommended WB: 1:500-2000; FCM: 2ug/Test

Properties

Stability & Storage: Store at -20°C or -80°C for 12 months. Avoid repeated freeze-thaw cycles.
 Shipping: Shipping with blue ice.

Antigen Details

Immunogen: KLH conjugated synthetic peptide: mouse EP4R/Prostaglandin E Receptor EP4
 Antigen Species: Mouse
 Gene ID: 19219
 Uniprot ID: P32240
 Synonyms: Prostaglandin E2 receptor EP4 subtype;Prostaglandin E receptor 4 subtype EP4;EP4;PTGER4;EP4;PE2R4;PTGER 4;PTGER 2;PGE receptor EP4 subtype;Prostaglandin E2 receptor;EP4R;Prostaglandin E receptor 4;MGC126583;Prostaglandin E Receptor EP4;PTGER2;Prostanoid EP4 receptor;PGE2 receptor EP4 subtype
 Biology Area: GPCR,Prostaglandins

Research Background

Receptor for prostaglandin E2 (PGE2). The activity of this receptor is mediated by G(s) proteins that stimulate adenylate cyclase. Has a relaxing effect on smooth muscle. May play an important role in regulating renal hemodynamics, intestinal epithelial transport, adrenal aldosterone secretion, and uterine function.

Inhibitor · Natural Compounds · Compound Libraries · Recombinant Proteins

This product is for Research Use Only · Not for Human or Veterinary or Therapeutic Use

Tel:781-999-4286 E_mail:info@targetmol.com Address:34 Washington Street,Wellesley Hills,MA 02481