

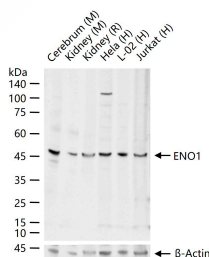
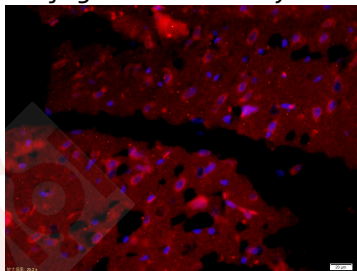
Anti-ENO1 Polyclonal Antibody

Product Details

Ig Type:	IgG
Reactivity:	Human,Mouse,Rat (predicted:Cow,Rabbit)
Molecular Weight:	Theoretical: 47 kDa. Actual: 47 kDa.
Purification:	Protein A purified

Applications

- Verified Activity:
1. Tissue/cell: Rat brain tissue;4% Paraformaldehyde-fixed and paraffin-embedded; Antigen retrieval: citrate buffer (0.01M, pH6.0), Boiling bathing for 15 min; Blocking buffer (normal goat serum) at 37°C for 20 min; Incubation: Anti-ENO1 Polyclonal Antibody, Unconjugated (TMAB-00614) 1:200, overnight at 4° C; The secondary antibody was Goat Anti-Rabbit IgG, Cy3 conjugated used at 1:200 dilution for 40 minutes at 37°C. DAPI (5 µg/ml,blue) was used to stain the cell nucleus.
 2. 25 µg total protein per Lane of various lysates probed with ENO1 polyclonal antibody, unconjugated (TMAB-00614) at 1:1000 dilution and 4°C overnight incubation. Followed by conjugated secondary antibody incubation at RT for 60 min.



Application:	IF,IHC-Fr,IHC-P,WB
Recommended	WB: 1:500-2000; IHC-P: 1:100-500; IHC-Fr: 1:100-500; IF: 1:100-500

Properties

- Stability & Storage: Store at -20°C or -80°C for 12 months. Avoid repeated freeze-thaw cycles.
- Shipping: Shipping with blue ice.

Antigen Details

Immunogen:	KLH conjugated synthetic peptide: human ENO1
Antigen Species:	Human
Gene ID:	2023
Uniprot ID:	P06733
Synonyms:	PPH;MPB1;HEL-S-17;NNE;enolase 1, (alpha);enolase 1, (α);ENO1L1
Biology Area:	Metabolism of carbohydrates,Tumor suppressors,Tumor Suppressors,Co-factors,Other factors, Transcription Factors,Co-factors,Carbohydrate metabolism,Energy Metabolism,Energy Metabolism

Research Background

Enolase 1 is a multifunctional enzyme that, as well as its role in glycolysis, plays a part in various processes such as growth control, hypoxia tolerance and allergic responses. May also function in the intravascular and pericellular fibrinolytic system due to its ability to serve as a receptor and activator of plasminogen on the cell surface of several cell-types such as leukocytes and neurons. Stimulates immunoglobulin production.

MBP1 binds to the myc promoter and acts as a transcriptional repressor. May be a tumor suppressor.

Enolase 2 has neurotrophic and neuroprotective properties on a broad spectrum of central nervous system (CNS) neurons. Binds, in a calcium-dependent manner, to cultured neocortical neurons and promotes cell survival.

Enolase 3 appears to have a function in striated muscle development and regeneration.

Inhibitor · Natural Compounds · Compound Libraries · Recombinant Proteins

This product is for Research Use Only· Not for Human or Veterinary or Therapeutic Use

Tel:781-999-4286 E_mail:info@targetmol.com Address:34 Washington Street,Wellesley Hills,MA 02481