

Anti-Endothelin-1/EDN1 Polyclonal Antibody 2

Product Details

Ig Type:	IgG
Reactivity:	Human, Mouse, Rat (predicted: Dog, Pig, Cow, Horse, Sheep, Guinea Pig)
Molecular Weight:	Theoretical: 2.5/24 kDa.
Purification:	Protein A purified

Applications

1. Blank control: A549. Primary Antibody (green line): Rabbit Anti-ET-1 antibody (TMAB-00612)
 Dilution: 1 µg/10⁶ cells;
 Isotype Control Antibody (orange line): Rabbit IgG.
 Secondary Antibody: Goat anti-rabbit IgG-AF647
 Dilution: 1 µg/test.

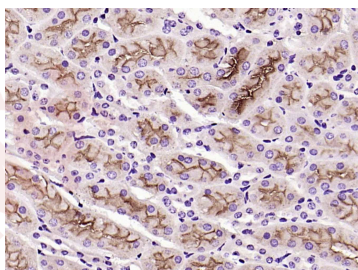
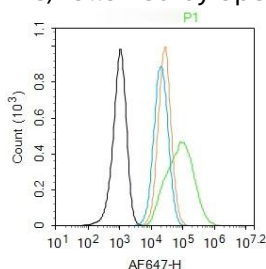
Protocol

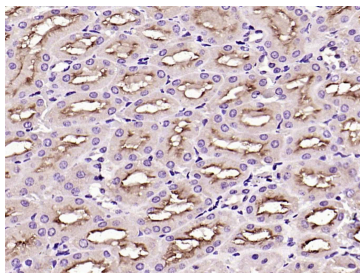
The cells were fixed with 4% PFA (10 min at room temperature) and then permeabilized with 0.1% PBST for 20 min at room temperature. The cells were then incubated in 5% BSA to block non-specific protein-protein interactions for 30 min at room temperature. Cells stained with Primary Antibody for 30 min at room temperature. The secondary antibody used for 40 min at room temperature.

Verified Activity:

2. Paraformaldehyde-fixed, paraffin embedded (mouse kidney); Antigen retrieval by boiling in sodium citrate buffer (pH6.0) for 15 min; Block endogenous peroxidase by 3% hydrogen peroxide for 20 min; Blocking buffer (normal goat serum) at 37°C for 30 min; Antibody incubation with (ET-1) Polyclonal Antibody, Unconjugated (TMAB-00612) at 1:200 overnight at 4°C, followed by operating according to SP Kit (Rabbit) instructions and DAB staining.

3. Paraformaldehyde-fixed, paraffin embedded (rat kidney); Antigen retrieval by boiling in sodium citrate buffer (pH6.0) for 15 min; Block endogenous peroxidase by 3% hydrogen peroxide for 20 min; Blocking buffer (normal goat serum) at 37°C for 30 min; Antibody incubation with (ET-1) Polyclonal Antibody, Unconjugated (TMAB-00612) at 1:200 overnight at 4°C, followed by operating according to SP Kit (Rabbit) instructions and DAB staining.





Application: ELISA,FCM,IF,IHC-Fr,IHC-P

Recommended ELISA=1:500-5000; FCM=1 µg/Test; IF=1:100-500; IHC-Fr=1:100-500; IHC-P=1:100-500

Properties

Stability & Storage: Store at -20°C or -80°C for 12 months. Avoid repeated freeze-thaw cycles.

Shipping: Shipping with blue ice.

Antigen Details

Immunogen: KLH conjugated synthetic peptide: human ET-1(CSCSSLMDKECVYFCHLDIIW Disulfide bridges C1-C15, C3-C11)

Antigen Species: Human

Gene ID: 1906

Uniprot ID: P05305

Synonyms: Endothelin-1;Preproendothelin-1 (PPET1);EDN1

Biology Area: Hormones,Cancer,Hypoxia,Vasoconstriction,Endothelium,Response to hypoxia

Research Background

Endothelins (ET) show potent constrictor activity in vascular and non-vascular smooth muscle. This family of 21-amino acid peptides exists in at least three isoforms - ET-1, ET-2, and ET-3, and is produced in endothelial and epithelial cells. ET's can mediate biological effects in cells and tissues, and have been shown to bind to an ET receptor in the lung, kidney, heart, and liver. Endothelin 1 is expressed in lung, placental stem villi vessels and in cultured placental vascular smooth muscle cells.

Molecular weight: 2491.9

Molecular formula: C109H159N25O32S5

CAS: 117399-94-7

MDL: MFCD00133305

Reconstitution: 1mM (1mg/0.4013mL)

Inhibitor · Natural Compounds · Compound Libraries · Recombinant Proteins

This product is for Research Use Only · Not for Human or Veterinary or Therapeutic Use

Tel:781-999-4286 E_mail:info@targetmol.com Address:34 Washington Street,Wellesley Hills,MA 02481