

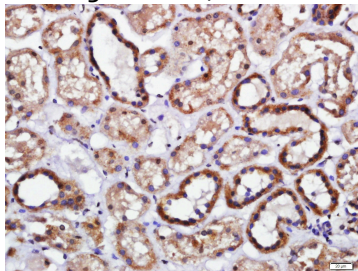
Anti-Endomucin Polyclonal Antibody

Product Details

Ig Type:	IgG
Reactivity:	Human (predicted:Mouse,Rat,Dog,Cow)
Molecular Weight:	Theoretical: 25 kDa.
Purification:	Protein A purified

Applications

Verified Activity: Paraformaldehyde-fixed, paraffin embedded (human kidney); Antigen retrieval by boiling in sodium citrate buffer (pH6.0) for 15 min; Block endogenous peroxidase by 3% hydrogen peroxide for 20 min; Blocking buffer (normal goat serum) at 37°C for 30 min; Antibody incubation with (Endomucin) Polyclonal Antibody, Unconjugated (TMAB-00609) at 1:400 overnight at 4°C, followed by a conjugated secondary for 20 min and DAB staining.



Application:	IF,IHC-Fr,IHC-P
Recommended	IHC-P: 1:100-500; IHC-Fr: 1:100-500; IF: 1:100-500

Properties

Stability & Storage:	Store at -20°C or -80°C for 12 months. Avoid repeated freeze-thaw cycles.
Shipping:	Shipping with blue ice.

Antigen Details

Immunogen:	KLH conjugated synthetic peptide: human Endomucin
Antigen Species:	Human
Gene ID:	51705
Uniprot ID:	Q9ULC0
Synonyms:	Gastric cancer antigen Ga34;Endomucin-2;MUCEN;Endomucin 2;EMCN2;MUC-14;Endothelial sialomucin;EMCN;Endomucin;Mucin 14
Biology Area:	Extracellular matrix,Endothelial Cell Markers,Glucosaminoglycans

Research Background

Endothelial sialomucin, also called endomucin or mucin-like sialoglycoprotein, which interferes with the assembly of focal adhesion complexes and inhibits interaction between cells and the extracellular matrix.

Inhibitor · Natural Compounds · Compound Libraries · Recombinant Proteins

This product is for Research Use Only · Not for Human or Veterinary or Therapeutic Use

Tel:781-999-4286 E_mail:info@targetmol.com Address:34 Washington Street,Wellesley Hills,MA 02481