

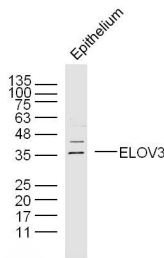
Anti-ELOV3 Polyclonal Antibody

Product Details

Ig Type:	IgG
Reactivity:	Mouse (predicted:Human,Rat,Dog)
Molecular Weight:	Theoretical: 31 kDa. Actual: 36 kDa.
Purification:	Protein A purified

Applications

Verified Activity:	Protein: Epithelium (mouse) lysate at 30 µg; Primary: rabbit Anti-ELOV3 (TMAB-00606) at 1:300; Secondary: HRP conjugated Goat-Anti-rabbit IgG (secondary antibody) at 1: 5000; Predicted band size: 31 kDa Observed band size: 36 kDa
--------------------	---



Application:	WB
Recommended	WB: 1:500-2000

Properties

Stability & Storage:	Store at -20°C or -80°C for 12 months. Avoid repeated freeze-thaw cycles.
Shipping:	Shipping with blue ice.

Antigen Details

Immunogen:	KLH conjugated synthetic peptide: human ELOV3
Antigen Species:	Human
Gene ID:	83401
Uniprot ID:	Q9HB03
Synonyms:	CIG30;MGC21435;Elovl3;3-keto acyl-CoA synthase Elovl3;Elongation of very long chain fatty acids protein 3 ELOV3;Cold-inducible glycoprotein of 30 kDa

Research Background

This gene encodes a protein that belongs to the GNS1/SUR4 family. Members of this family play a role in elongation of long chain fatty acids to provide precursors for synthesis of sphingolipids and ceramides. [provided by RefSeq, Jul 2013].

Inhibitor · Natural Compounds · Compound Libraries · Recombinant Proteins

This product is for Research Use Only · Not for Human or Veterinary or Therapeutic Use

Tel:781-999-4286 E_mail:info@targetmol.com Address:34 Washington Street,Wellesley Hills,MA 02481