

Anti-Elastin Polyclonal Antibody 2

Product Details

Ig Type:	IgG
Reactivity:	Human,Mouse,Rat
Molecular Weight:	Theoretical: 68 kDa. Actual: 68 kDa.
Purification:	Protein A purified

Applications

1. Images provided the Independent Validation Program (badge number 28751): Formalin-fixed and paraffin embedded mouse heart labeled with Rabbit Anti-alpha Elastin Polyclonal Antibody (TMAB-00605) at 1:1000 4°C temperature overnight 4°C followed by conjugation to secondary antibody.

2. Sample: Lung (Mouse) Lysate at 30 µg

Primary: Anti-alpha Elastin/Tropoelastin (TMAB-00605) at 1/300 dilution

Secondary: IRDye800CW Goat Anti-Mouse IgG at 1/10000 dilution

Predicted band size: 70 kDa

Observed band size: 68 kDa

3. Sample:

Lane 1: Uterus (Mouse) Lysate at 40 µg

Lane 2: Lung (Mouse) Lysate at 40 µg

Lane 3: Liver (Mouse) Lysate at 40 µg

Lane 4: NIH/3T3 (Mouse) Cell Lysate at 30 µg

Lane 5: Lung (Rat) Lysate at 40 µg

Lane 6: Liver (Rat) Lysate at 40 µg

Lane 7: Testis (Rat) Lysate at 40 µg

Lane 8: SH-SY5Y (Human) Cell Lysate at 30 µg

Lane 9: A549 (Human) Cell Lysate at 30 µg

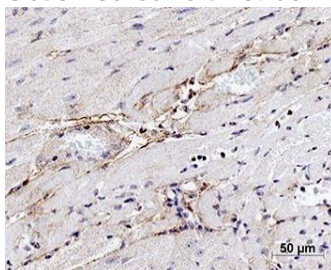
Primary: Anti-Elastin (TMAB-00605) at 1/1000 dilution

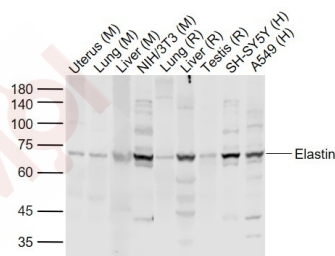
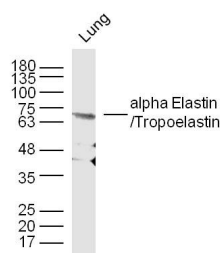
Secondary: IRDye800CW Goat Anti-Rabbit IgG at 1/20000 dilution

Predicted band size: 66 kDa

Observed band size: 68 kDa

Verified Activity:





Application: IF,IHC-Fr,IHC-P,WB

Recommended IF=1:100-500; IHC-Fr=1:100-500; IHC-P=1:100-500; WB=1:500-2000

Properties

Stability & Storage: Store at -20°C or -80°C for 12 months. Avoid repeated freeze-thaw cycles.

Shipping: Shipping with blue ice.

Antigen Details

Immunogen: KLH conjugated synthetic peptide: human Elastin

Antigen Species: Human

Gene ID: 2006

Uniprot ID: P15502

Synonyms: Eln;Tropoelastin;Elastin

Research Background

This gene encodes a protein that is one of the two components of elastic fibers. Elastic fibers comprise part of the extracellular matrix and confer elasticity to organs and tissues including the heart, skin, lungs, ligaments, and blood vessels. The encoded protein is rich in hydrophobic amino acids such as glycine and proline, which form mobile hydrophobic regions bounded by crosslinks between lysine residues. Degradation products of the encoded protein, known as elastin-derived peptides or elastokines, bind the elastin receptor complex and other receptors and stimulate migration and proliferation of monocytes and skin fibroblasts. Elastokines can also contribute to cancer progression. Deletions and mutations in this gene are associated with supravalvular aortic stenosis (SVAS) and autosomal dominant cutis laxa. [provided by RefSeq, Aug 2017].

Inhibitor · Natural Compounds · Compound Libraries · Recombinant Proteins

This product is for Research Use Only. Not for Human or Veterinary or Therapeutic Use

Tel:781-999-4286 E_mail:info@targetmol.com Address:34 Washington Street,Wellesley Hills,MA 02481