

## Anti-ELANE Polyclonal Antibody 2

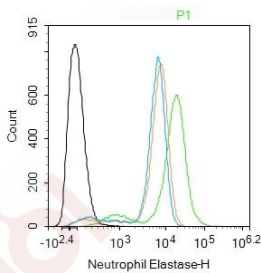
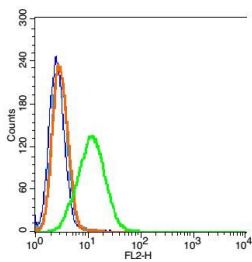
### Product Details

**Ig Type:** IgG  
**Reactivity:** Human (predicted:Mouse,Rat,Dog)  
**Molecular Weight:** Theoretical: 26 kDa.  
**Purification:** Protein A purified

### Applications

**1. Blank control: A549 (blue),** the cells were fixed with 2% paraformaldehyde (10 min) and then permeabilized with ice-cold 90% methanol for 30 min on ice.  
**Isotype Control Antibody:** Rabbit IgG (orange);  
**Secondary Antibody:** Goat anti-rabbit IgG-FITC (white blue),  
**Dilution:** 1:100 in 1 X PBS containing 0.5% BSA;  
**Primary Antibody Dilution:** 1  $\mu$ L in 100  $\mu$ L 1X PBS containing 0.5% BSA (green).  
**2. Blank control: THP-1. Primary Antibody (green line):** Rabbit Anti-Neutrophil Elastase antibody (TMAB-00603)  
**Dilution:** 1  $\mu$ g/ $10^6$  cells;  
**Isotype Control Antibody (orange line):** Rabbit IgG.  
**Secondary Antibody:** Goat anti-rabbit IgG-FITC  
**Dilution:** 0.5  $\mu$ g/test.  
**Protocol**  
 The cells were fixed with 4% PFA (10 min at room temperature) and then permeabilized with 0.1% PBST for 20 min at room temperature. The cells were then incubated in 5% BSA to block non-specific protein-protein interactions for 30 min at room temperature. Cells stained with Primary Antibody for 30 min at room temperature. The secondary antibody used for 40 min at room temperature.

Verified Activity:



**Application:** FCM  
**Recommended:** FCM: 1 $\mu$ g/Test

### Properties

Stability & Storage: Store at -20°C or -80°C for 12 months. Avoid repeated freeze-thaw cycles.

Shipping: Shipping with blue ice.

---

### Antigen Details

Immunogen: KLH conjugated synthetic peptide: human Neutrophil Elastase/ELANE

Antigen Species: Human

Gene ID: 1991

Uniprot ID: P08246

Synonyms: Medullasin; Human leukocyte elastase (HLE); ELA2; Neutrophil elastase; Elastase-2; ELANE; Bone marrow serine protease; PMN elastase

Biology Area: Calcium Signaling, Elastin, Other Enzymes, Defensin, Angiogenic factors ELISA kits, Adhesion molecules ELISA kits, NK Cells, Macrophage / Inflamm., Regulatory, Extracellular matrix

---

### Research Background

Elastases form a subfamily of serine proteases that hydrolyze many proteins in addition to elastin. Humans have six elastase genes which encode the structurally similar proteins. The product of this gene hydrolyzes proteins within specialized neutrophil lysosomes, called azurophil granules, as well as proteins of the extracellular matrix following the protein's release from activated neutrophils. The enzyme may play a role in degenerative and inflammatory diseases by its proteolysis of collagen-IV and elastin of the extracellular matrix. This protein degrades the outer membrane protein A (OmpA) of *E. coli* as well as the virulence factors of such bacteria as *Shigella*, *Salmonella* and *Yersinia*. Mutations in this gene are associated with cyclic neutropenia and severe congenital neutropenia (SCN). This gene is clustered with other serine protease gene family members, azurocidin 1 and proteinase 3 genes, at chromosome 19pter. All 3 genes are expressed coordinately and their protein products are packaged together into azurophil granules during neutrophil differentiation. [provided by RefSeq, May 2009].

**Inhibitor · Natural Compounds · Compound Libraries · Recombinant Proteins**

This product is for Research Use Only · Not for Human or Veterinary or Therapeutic Use

Tel: 781-999-4286 E\_mail: info@targetmol.com Address: 34 Washington Street, Wellesley Hills, MA 02481

---