

Anti-E-Cadherin/Cadherin-1 Polyclonal Antibody

Product Details

Ig Type:	IgG
Reactivity:	Human,Rat (predicted:Mouse,Pig,Cow,Horse,Rabbit)
Molecular Weight:	Theoretical: 90/97 kDa. Actual: 125 kDa.
Purification:	Protein A purified

Applications

1. Paraformaldehyde-fixed, paraffin embedded (Human colon carcinoma); Antigen retrieval by microwave in sodium citrate buffer (pH6.0); Block endogenous peroxidase by 3% hydrogen peroxide for 30 minutes; Blocking buffer (3% BSA) at RT for 30 min; Antibody incubation with (E cadherin) Polyclonal Antibody, Unconjugated (TMAB-00584) at 1:400 overnight at 4°C, followed by conjugation to the secondary antibody (labeled with HRP) and DAB staining.

2. Sample:

HT29 (Human) Cell Lysate at 30 µg

PC-3 (Human) Cell Lysate at 30 µg

Primary: Anti-E cadherin (TMAB-00584) at 1/1000 dilution

Secondary: IRDye800CW Goat Anti-Rabbit IgG at 1/20000 dilution

Predicted band size: 20/80 kDa

Observed band size: 130 kDa

3. Paraformaldehyde-fixed, paraffin embedded (Human stomach); Antigen retrieval by microwave in sodium citrate buffer (pH6.0); Block endogenous peroxidase by 3% hydrogen peroxide for 30 minutes; Blocking buffer (3% BSA) at RT for 30 min; Antibody incubation with (E cadherin) Polyclonal Antibody, Unconjugated (TMAB-00584) at 1:400 overnight at 4°C, followed by conjugation to the secondary antibody (labeled with HRP) and DAB staining.

4. Sample:

Lane 1: A431 (Human) Cell Lysate at 30 µg

Lane 2: A549 (Human) Cell Lysate at 30 µg

Lane 3: HepG2 (Human) Cell Lysate at 30 µg

Primary: Anti-E cadherin (TMAB-00584) at 1/1000 dilution

Secondary: IRDye800CW Goat Anti-Rabbit IgG at 1/20000 dilution

Predicted band size: 125 kDa

Observed band size: 125 kDa

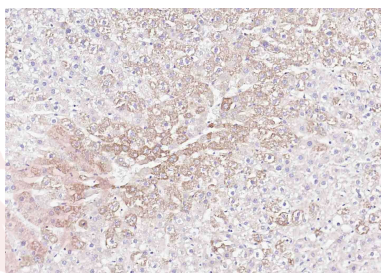
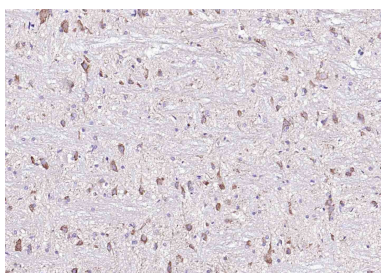
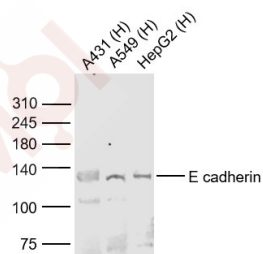
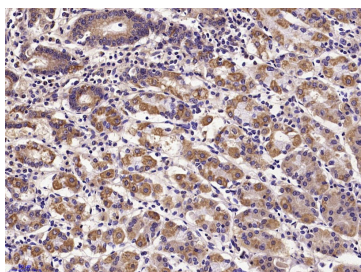
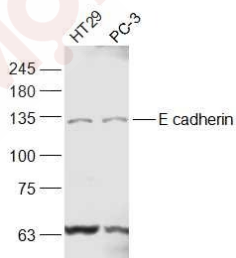
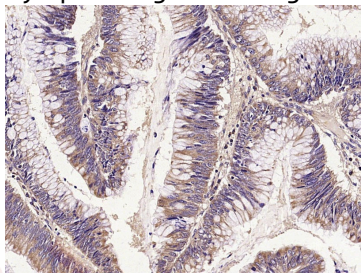
5. Paraformaldehyde-fixed, paraffin embedded (rat spinal cord); Antigen retrieval by boiling in sodium citrate buffer (pH6.0) for 15 min; Block endogenous peroxidase by 3% hydrogen peroxide for 20 min; Blocking buffer (normal goat serum) at 37°C for 30 min; Antibody incubation with (E cadherin) Polyclonal Antibody, Unconjugated (TMAB-00584) at 1:200 overnight at 4°C, followed by operating according to SP Kit (Rabbit) instructions and DAB staining.

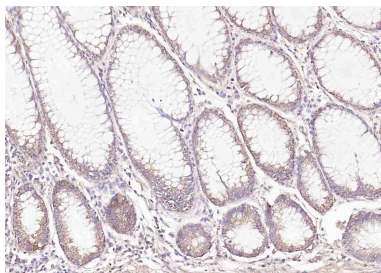
6. Paraformaldehyde-fixed, paraffin embedded (rat liver); Antigen retrieval by boiling in sodium citrate buffer (pH6.0) for 15 min; Block endogenous peroxidase by 3% hydrogen peroxide for 20 min; Blocking buffer (normal goat serum) at 37°C for 30 min; Incubation with (E cadherin) Polyclonal Antibody, Unconjugated (TMAB-00584) at 1:200 overnight at 4°C, followed by operating according to SP Kit (Rabbit) instructions and DAB staining.

7. Paraformaldehyde-fixed, paraffin embedded (human colon); Antigen retrieval by boiling in sodium citrate buffer (pH6.0) for 15 min; Block endogenous peroxidase by 3% hydrogen

Verified Activity:

peroxide for 20 min; Blocking buffer (normal goat serum) at 37°C for 30 min; Incubation with (E cadherin) Polyclonal Antibody, Unconjugated (TMAB-00584) at 1:200 overnight at 4°C, followed by operating according to SP Kit (Rabbit) instructions and DAB staining.





Application: IF,IHC-Fr,IHC-P,WB

Recommended IF=1:200-800; IHC-Fr=1:200-800; IHC-P=1:200-800; WB=1:1000-5000

Properties

Stability & Storage: Store at -20°C or -80°C for 12 months. Avoid repeated freeze-thaw cycles.

Shipping: Shipping with blue ice.

Antigen Details

Immunogen: KLH conjugated synthetic peptide: human E-cadherin

Antigen Species: Human

Gene ID: 999

Uniprot ID: P12830

Synonyms: Arc-1;UVO;CD324;LCAM;E-cad;CDHE;E-Cadherin;CDH1;cadherin 1, type 1, E-cadherin (epithelial);ECAD

Biology Area: Cadherins,Kidney development,e cadherin,Cadherins,Calcium Binding Proteins

Research Background

This gene encodes a classical cadherin of the cadherin superfamily. Alternative splicing results in multiple transcript variants, at least one of which encodes a preproprotein that is proteolytically processed to generate the mature glycoprotein. This calcium-dependent cell-cell adhesion protein is comprised of five extracellular cadherin repeats, a transmembrane region and a highly conserved cytoplasmic tail. Mutations in this gene are correlated with gastric, breast, colorectal, thyroid and ovarian cancer. Loss of function of this gene is thought to contribute to cancer progression by increasing proliferation, invasion, and/or metastasis. The ectodomain of this protein mediates bacterial adhesion to mammalian cells and the cytoplasmic domain is required for internalization. This gene is present in a gene cluster with other members of the cadherin family on chromosome 16. [provided by RefSeq, Nov 2015]

Inhibitor · Natural Compounds · Compound Libraries · Recombinant Proteins

This product is for Research Use Only. Not for Human or Veterinary or Therapeutic Use

Tel:781-999-4286 E_mail:info@targetmol.com Address:34 Washington Street,Wellesley Hills,MA 02481
