

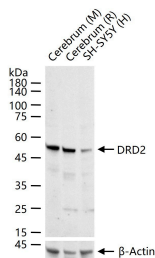
Anti-DRD2 Polyclonal Antibody 2

Product Details

Ig Type:	IgG
Reactivity:	Human,Mouse,Rat (predicted:Dog,Cow,Horse,Rabbit,Sheep)
Molecular Weight:	Theoretical: 51 kDa. Actual: 52 kDa.
Purification:	Protein A purified

Applications

Verified Activity: 25 µg total protein per Lane of various lysates probed with DRD2 polyclonal antibody, unconjugated (TMAB-00572) at 1:1000 dilution and 4°C overnight incubation. Followed by conjugated secondary antibody incubation at RT for 60 min.



Application:	ELISA,WB
Recommended	WB: 1:500-2000; ELISA: 1:5000-10000

Properties

Stability & Storage:	Store at -20°C or -80°C for 12 months. Avoid repeated freeze-thaw cycles.
Shipping:	Shipping with blue ice.

Antigen Details

Immunogen:	KLH conjugated synthetic peptide: human DRD2
Antigen Species:	Human
Gene ID:	1813
Uniprot ID:	P14416
Synonyms:	D(2) dopamine receptor;Dopamine D2 receptor;DRD2
Biology Area:	GPCR,Dopamine,Dopamine Receptors,Dendrite marker

Research Background

This gene encodes the D2 subtype of the dopamine receptor. This G-protein coupled receptor inhibits adenylyl cyclase activity. A missense mutation in this gene causes myoclonus dystonia; other mutations have been associated with schizophrenia. Alternative splicing of this gene results in two transcript variants encoding different isoforms. A third variant has been described, but it has not been determined whether this form is normal or due to aberrant splicing. [provided by RefSeq, Jul 2008]

Inhibitor · Natural Compounds · Compound Libraries · Recombinant Proteins

This product is for Research Use Only · Not for Human or Veterinary or Therapeutic Use

Tel:781-999-4286 E_mail:info@targetmol.com Address:34 Washington Street,Wellesley Hills,MA 02481