

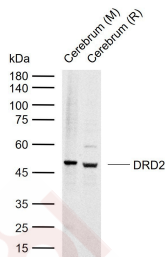
## Anti-DRD2 Polyclonal Antibody

### Product Details

Ig Type: IgG  
Reactivity: Mouse,Rat (predicted:Human)  
Molecular Weight: Theoretical: 51 kDa. Actual: 50 kDa.  
Purification: Protein A purified

### Applications

Sample:  
Lane 1: Mouse Cerebrum tissue lysates  
Lane 2: Rat Cerebrum tissue lysates  
Verified Activity: Primary: Anti-DRD2 (TMAB-00571) at 1/1000 dilution  
Secondary: IRDye800CW Goat Anti-Rabbit IgG at 1/20000 dilution  
Predicted band size: 51 kDa  
Observed band size: 50 kDa



Application: WB  
Recommended WB: 1:500-2000

### Properties

Stability & Storage: Store at -20°C or -80°C for 12 months. Avoid repeated freeze-thaw cycles.  
Shipping: Shipping with blue ice.

### Antigen Details

Immunogen: KLH conjugated synthetic peptide: human DRD2  
Antigen Species: Human  
Gene ID: 1813  
Uniprot ID: P14416  
Synonyms: D(2) dopamine receptor;DRD2;Dopamine D2 receptor  
Biology Area: GPCR,Dopamine,Dopamine Receptors,Dendrite marker

### Research Background

This gene encodes the D2 subtype of the dopamine receptor. This G-protein coupled receptor inhibits adenylyl cyclase activity. A missense mutation in this gene causes myoclonus dystonia; other mutations have been associated

## A DRUG SCREENING EXPERT

---

with schizophrenia. Alternative splicing of this gene results in two transcript variants encoding different isoforms. A third variant has been described, but it has not been determined whether this form is normal or due to aberrant splicing. [provided by RefSeq, Jul 2008]

**Inhibitor · Natural Compounds · Compound Libraries · Recombinant Proteins**

This product is for Research Use Only · Not for Human or Veterinary or Therapeutic Use

Tel:781-999-4286 E\_mail:info@targetmol.com Address:34 Washington Street,Wellesley Hills,MA 02481