

Anti-CX3CR1 Polyclonal Antibody

Product Details

Ig Type:	IgG
Reactivity:	Mouse,Rat (predicted:Human,Dog,Cow,Rabbit)
Molecular Weight:	Theoretical: 39 kDa. Actual: 47 kDa.
Purification:	Protein A purified

Applications

1. Sample:

Lane 1: Mouse Spinal cord tissue lysates

Lane 2: Mouse Cerebrum tissue lysates

Lane 3: Rat Spinal cord tissue lysates

Lane 4: Rat Cerebrum tissue lysates

Primary: Anti-CX3CR1 (TMAB-00494) at 1/1000 dilution

Secondary: IRDye800CW Goat Anti-Rabbit IgG at 1/20000 dilution

Predicted band size: 39 kDa

Observed band size: 47 kDa

2. Paraformaldehyde-fixed, paraffin embedded (rat spinal cord); Antigen retrieval by boiling in sodium citrate buffer (pH6.0) for 15 min; Block endogenous peroxidase by 3% hydrogen peroxide for 20 min; Blocking buffer (normal goat serum) at 37°C for 30 min; Antibody incubation with (CX3CR1) Polyclonal Antibody, Unconjugated (TMAB-00494) at 1:1000 overnight at 4°C, followed by operating according to SP Kit (Rabbit) instructions and DAB staining.

Verified Activity: 3. Blank control: Raw264.7. Primary Antibody (green line): Rabbit Anti-CX3CR1 antibody (TMAB-00494)

Dilution: 1 µg/Test;

Secondary Antibody: Goat anti-rabbit IgG-FITC

Dilution: 0.5 µg/Test.

Protocol

The cells were incubated in 5% BSA to block non-specific protein-protein interactions for 30 min at room temperature. Cells stained with Primary Antibody for 30 min at room temperature. The secondary antibody used for 40 min at room temperature.

4. Sample:

Heart (Mouse) Lysate at 40 µg

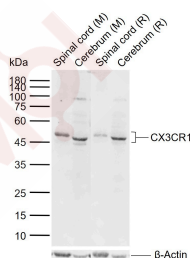
Heart (Rat) Lysate at 40 µg

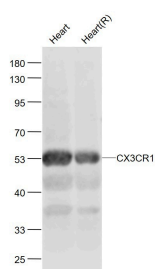
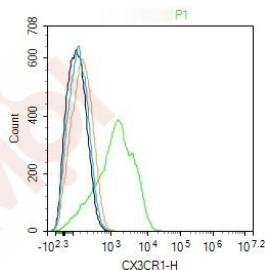
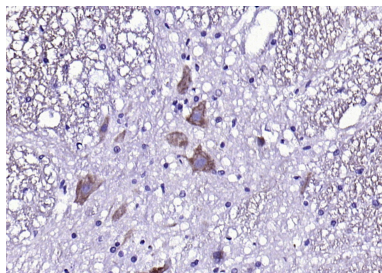
Primary: Anti-CX3CR1 (TMAB-00494) at 1/1000 dilution

Secondary: IRDye800CW Goat Anti-Rabbit IgG at 1/20000 dilution

Predicted band size: 50/55 kDa

Observed band size: 53 kD





Application: FCM,IF,IHC-Fr,IHC-P,WB

Recommended WB: 1:500-2000; IHC-P: 1:100-500; IHC-Fr: 1:100-500; IF: 1:100-500; FCM: 1ug/Test

Properties

Stability & Storage: Store at -20°C or -80°C for 12 months. Avoid repeated freeze-thaw cycles.

Shipping: Shipping with blue ice.

Antigen Details

Immunogen: KLH conjugated synthetic peptide: human CX3CR1

Antigen Species: Human

Gene ID: 1524

Uniprot ID: P49238

Synonyms: CMKBRL1;GPR13;CCRL1;CX3CR1;CMKDR1;V28;GPRV28

Biology Area: Conjugates,Nociception,SARS Coronavirus,Host Virus Interaction,Delta Chemokine Receptors, HIV-related,Cell adhesion

Research Background

Fractalkine is a transmembrane protein and chemokine involved in the adhesion and migration of leukocytes. The protein encoded by this gene is a receptor for fractalkine. The encoded protein also is a coreceptor for HIV-1, and some variations in this gene lead to increased susceptibility to HIV-1 infection and rapid progression to AIDS. Four transcript variants encoding two different isoforms have been found for this gene. [provided by RefSeq, Jan 2010]

Inhibitor · Natural Compounds · Compound Libraries · Recombinant Proteins

This product is for Research Use Only · Not for Human or Veterinary or Therapeutic Use

Tel:781-999-4286 E_mail:info@targetmol.com Address:34 Washington Street,Wellesley Hills,MA 02481