

Anti-CX3CL1/Fractalkine Polyclonal Antibody

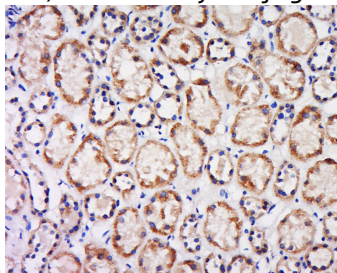
Product Details

Ig Type:	IgG
Reactivity:	Human (predicted:Mouse,Rat)
Molecular Weight:	Theoretical: 41 kDa.
Purification:	Protein A purified

Applications

Verified Activity:

Tissue/cell: human kidney tissue; 4% Paraformaldehyde-fixed and paraffin-embedded; Antigen retrieval: citrate buffer (0.01M, pH6.0), Boiling bathing for 15 min; Block endogenous peroxidase by 3% Hydrogen peroxide for 30 min; Blocking buffer (normal goat serum) at 37°C for 20 min; Incubation: Anti-CX3CL1 Polyclonal Antibody, Unconjugated (TMAB-00493) 1:500, overnight at 4°C, followed by conjugation to the secondary antibody and DAb staining.



Application:	IF,IHC-Fr,IHC-P
Recommended	IHC-P: 1:100-500; IHC-Fr: 1:100-500; IF: 1:100-500

Properties

Stability & Storage:	Store at -20°C or -80°C for 12 months. Avoid repeated freeze-thaw cycles.
Shipping:	Shipping with blue ice.

Antigen Details

Immunogen:	KLH conjugated synthetic peptide: human CX3CL1
Antigen Species:	Human
Gene ID:	6376
Uniprot ID:	P78423
Synonyms:	SCYD1;Small-inducible cytokine D1;FKN;CX3CL1;Neurotactin;C-X3-C motif chemokine 1;CX3C membrane-anchored chemokine;Fractalkine;NTT
Biology Area:	Macrophage / Inflamm.,Delta Chemokines (CXC3),Chemokines

Research Background

CX3CL1 is a member of the delta chemokine subfamily that contains a unique CX3C cysteine motif near the N-terminal. Unlike other known chemokines, it is a type 1 membrane protein containing a chemokine domain tethered on a long mucin-like stalk. CX3CL1, a leukocyte chemoattractant, is expressed in various tissues including the brain,

A DRUG SCREENING EXPERT

heart, lung, kidney, skeletal muscle, and testis. The expression is reported to be up-regulated in endothelial cells and microglia by inflammatory signals. CX3CR1, a specific receptor for fractalkine, mediates both leukocyte migration and adhesion.

Inhibitor · Natural Compounds · Compound Libraries · Recombinant Proteins

This product is for Research Use Only · Not for Human or Veterinary or Therapeutic Use

Tel:781-999-4286 E_mail:info@targetmol.com Address:34 Washington Street,Wellesley Hills,MA 02481