

Anti-CTLA4 Polyclonal Antibody

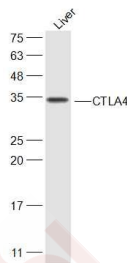
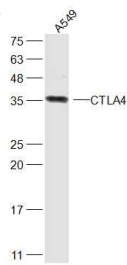
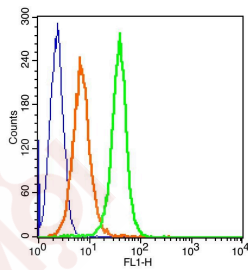
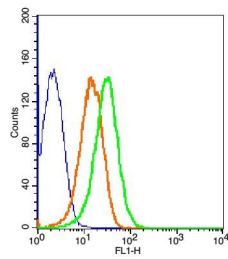
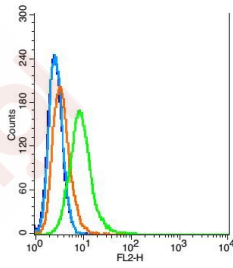
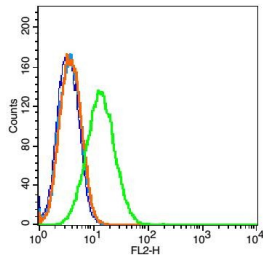
Product Details

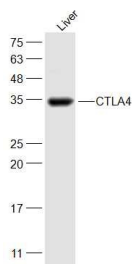
Ig Type:	IgG
Reactivity:	Human,Mouse,Rat (predicted:Dog,Cow,Rabbit,Sheep)
Molecular Weight:	Theoretical: 21 kDa. Actual: 35 kDa.
Purification:	Protein A purified

Applications

1. Blank control: Raji (blue). Primary Antibody: Rabbit Anti-CTLA4 antibody (TMAB-00491), Dilution: 5 μ g in 100 μ L 1X PBS containing 0.5% BSA; Isotype Control Antibody: Rabbit IgG (orange),used under the same conditions. Secondary Antibody: Goat anti-rabbit IgG-Pe (white blue), Dilution: 1:200 in 1 X PBS containing 0.5% BSA.
2. Blank control: Hela (blue), the cells were fixed with 2% paraformaldehyde (10 min) Isotype Control Antibody: Rabbit Igg (orange); Secondary Antibody: Goat anti-rabbit IgG-PE (white blue), Dilution: 1:200 in 1 X PBS containing 0.5% BSA; Primary Antibody Dilution: 1 μ g in 100 μ L 1X PBS containing 0.5% BSA (green).
3. Blank control (blue): Mouse Spleen Cells (fixed with 2% paraformaldehyde (10 min)). Primary Antibody: Rabbit Anti-Phospho-c-Fos (Thr325)/FITC Conjugated antibody (TMAB-00491/FITC), Dilution: 1 μ g in 100 μ L 1X PBS containing 0.5% BSA; Isotype Control Antibody: Rabbit IgG/FITC (orange),used under the same conditions.
4. Blank control (blue): Molt-4 Cells (fixed with 2% paraformaldehyde (10 min)). Primary Antibody: Rabbit Anti-CTLA4/FITC Conjugated antibody (TMAB-00491/FITC), Dilution: 1 μ g in 100 μ L 1X PBS containing 0.5% BSA; Isotype Control Antibody: Rabbit IgG/FITC orange),used under the same conditions.
5. Sample:
A549 (Human) Cell Lysate at 30 μ g
Primary: Anti-CTLA4 (TMAB-00491) at 1/300 dilution
Secondary: IRDye800CW Goat Anti-Rabbit IgG at 1/20000 dilution
Predicted band size: 21 kDa
Observed band size: 35 kDa
6. Sample:
Liver (Mouse) Cell Lysate at 30 μ g
Primary: Anti-CTLA4 (TMAB-00491) at 1/300 dilution
Secondary: IRDye800CW Goat Anti-Rabbit IgG at 1/20000 dilution
Predicted band size: 21 kDa
Observed band size: 35 kDa
7. Sample:
Liver (Rat) Cell Lysate at 30 μ g
Primary: Anti-CTLA4 (TMAB-00491) at 1/300 dilution
Secondary: IRDye800CW Goat Anti-Rabbit IgG at 1/20000 dilution
Predicted band size: 21 kDa
Observed band size: 35 kDa

Verified Activity:





Application: FCM,WB

Recommended WB: 1:500-2000; FCM: 1µg/Test

Properties

Stability & Storage: Store at -20°C or -80°C for 12 months. Avoid repeated freeze-thaw cycles.

Shipping: Shipping with blue ice.

Antigen Details

Immunogen: KLH conjugated synthetic peptide: human CTLA-4/CD152

Antigen Species: Human

Gene ID: 1493

Uniprot ID: P16410

Synonyms: CELIAC3;ICOS;ALPS5;IDDM12;CD152;GSE;GRD4;CTLA4

Biology Area: Regulatory T Cells,CD,Cytotoxic Cells,Autoimmune,SARS Coronavirus,T Lymphocytic Lineage

Research Background

This gene is a member of the immunoglobulin superfamily and encodes a protein which transmits an inhibitory signal to T cells. The protein contains a V domain, a transmembrane domain, and a cytoplasmic tail. Alternate transcriptional splice variants, encoding different isoforms, have been characterized. The membrane-bound isoform functions as a homodimer interconnected by a disulfide bond, while the soluble isoform functions as a monomer. Mutations in this gene have been associated with insulin-dependent diabetes mellitus, Graves disease, Hashimoto thyroiditis, celiac disease, systemic lupus erythematosus, thyroid-associated orbitopathy, and other autoimmune diseases. [provided by RefSeq, Jul 2008]

Inhibitor · Natural Compounds · Compound Libraries · Recombinant Proteins

This product is for Research Use Only · Not for Human or Veterinary or Therapeutic Use

Tel:781-999-4286 E_mail:info@targetmol.com Address:34 Washington Street,Wellesley Hills,MA 02481
