

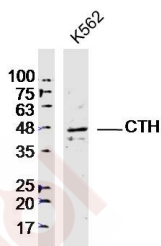
Anti-CTH Polyclonal Antibody

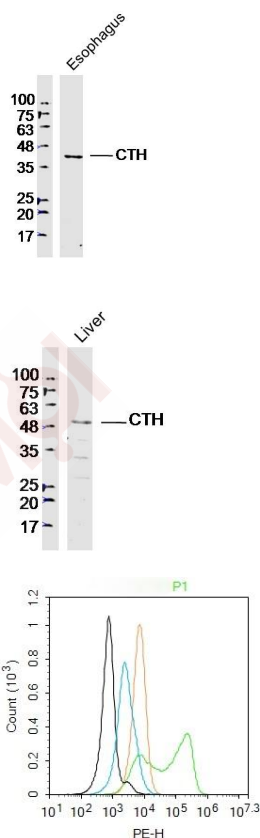
Product Details

Ig Type:	IgG
Reactivity:	Human, Mouse (predicted: Rat, Dog, Cow, Rabbit)
Molecular Weight:	Theoretical: 45 kDa. Actual: 45 kDa.
Purification:	Protein A purified

Applications

1. Sample: K562 Cell (Human) Lysate at 40 µg
 Primary: Anti-CTH (TMAB-00490) at 1/300 dilution
 Secondary: IRDye800CW Goat Anti-Rabbit IgG at 1/20000 dilution
 Predicted band size: 45 kDa
 Observed band size: 45 kDa
2. Sample: Esophagus (Mouse) Lysate at 40 µg
 Primary: Anti-CTH (TMAB-00490) at 1/300 dilution
 Secondary: IRDye800CW Goat Anti-Rabbit IgG at 1/20000 dilution
 Predicted band size: 45 kDa
 Observed band size: 45 kDa
3. Sample: Liver (Mouse) Lysate at 40 µg
 Primary: Anti-CTH (TMAB-00490) at 1/300 dilution
 Secondary: IRDye800CW Goat Anti-Rabbit IgG at 1/20000 dilution
 Predicted band size: 45 kDa
 Observed band size: 48 kDa
4. Blank control: U937. Primary Antibody (green line): Rabbit Anti-CTH antibody (TMAB-00490)
 Dilution: 2 µg/10⁶ cells;
 Isotype Control Antibody (orange line): Rabbit IgG.
 Secondary Antibody: Goat anti-rabbit IgG-PE
 Dilution: 1 µg/test.
 Protocol
 The cells were fixed with 4% PFA (10 min at room temperature) and then permeabilized with 0.1% PBST for 20 min at room temperature. The cells were then incubated in 5% BSA to block non-specific protein-protein interactions for 30 min at room temperature. Cells stained with Primary Antibody for 30 min at room temperature. The secondary antibody used for 40 min at room temperature.





Application: FCM,WB

Recommended WB: 1:500-2000; FCM: 2ug/Test

Properties

Stability & Storage: Store at -20°C or -80°C for 12 months. Avoid repeated freeze-thaw cycles.

Shipping: Shipping with blue ice.

Antigen Details

Immunogen: KLH conjugated synthetic peptide: human CTH/CSE/Cystathionase

Antigen Species: Human

Gene ID: 1491

Uniprot ID: P32929

Synonyms: Cysteine-Protein Sulphydrase;CTH;Gamma-Cystathionase;γ-Cystathionase;Cystathionine γ-Lyase;Cystathionine Gamma-Lyase

Biology Area: Amino acid metabolism,Amino Acids

Research Background

Catalyzes the last step in the transsulfuration pathway from methionine to cysteine. Has broad substrate specificity. Converts cystathionine to cysteine, ammonia and 2-oxobutanoate. Converts two cysteine molecules to lanthionine and hydrogen sulfide. Can also accept homocysteine as substrate. Specificity depends on the levels of the endogenous substrates. Generates the endogenous signaling molecule hydrogen sulfide (H₂S), and so contributes to the regulation of blood pressure.

Defects in CTH are the cause of cystathioninuria (CSTNU). It is an autosomal recessive phenotype characterized by abnormal accumulation of plasma cystathionine, leading to increased urinary excretion.

Inhibitor · Natural Compounds · Compound Libraries · Recombinant Proteins

This product is for Research Use Only · Not for Human or Veterinary or Therapeutic Use

Tel:781-999-4286 E_mail:info@targetmol.com Address:34 Washington Street,Wellesley Hills,MA 02481