

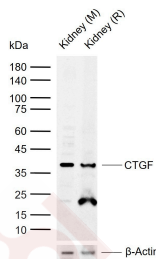
Anti-CTGF/CCN2 Polyclonal Antibody

Product Details

Ig Type:	IgG
Reactivity:	Mouse,Rat (predicted:Chicken,Dog,Pig,Rabbit,Human)
Molecular Weight:	Theoretical: 36 kDa. Actual: 38 kDa.
Purification:	Protein A purified

Applications

Sample:	Lane 1: Mouse Kidney tissue lysates Lane 2: Rat Kidney tissue lysates
Verified Activity:	Primary: Anti-CTGF (TMAB-00489) at 1/1000 dilution Secondary: IRDye800CW Goat Anti-Rabbit IgG at 1/20000 dilution Predicted band size: 36 kDa Observed band size: 38 kDa



Application:	WB
Recommended	WB: 1:500-2000

Properties

Stability & Storage:	Store at -20°C or -80°C for 12 months. Avoid repeated freeze-thaw cycles.
Shipping:	Shipping with blue ice.

Antigen Details

Immunogen:	KLH conjugated synthetic peptide: mouse CTGF
Antigen Species:	Mouse
Uniprot ID:	P29268
Synonyms:	Cellular communication network factor 2;Insulin-like growth factor-binding protein 8 (IBP-8; IGF-binding protein 8;IGFBP-8);HCS24;CCN family member 2;Connective tissue growth factor; CTGF;Hypertrophic chondrocyte-specific protein 24;IGFBP8;CCN2
Biology Area:	Growth Factors,CCN Family

Research Background

The protein encoded by this gene is a mitogen that is secreted by vascular endothelial cells. The encoded protein plays a role in chondrocyte proliferation and differentiation, cell adhesion in many cell types, and is related to

A DRUG SCREENING EXPERT

platelet-derived growth factor. Certain polymorphisms in this gene have been linked with a higher incidence of systemic sclerosis. [provided by RefSeq, Nov 2009].

Inhibitor · Natural Compounds · Compound Libraries · Recombinant Proteins

This product is for Research Use Only · Not for Human or Veterinary or Therapeutic Use

Tel:781-999-4286 E_mail:info@targetmol.com Address:34 Washington Street,Wellesley Hills,MA 02481