

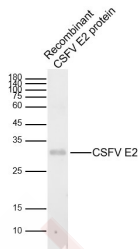
Anti-CSFV E2 Polyclonal Antibody 2

Product Details

Ig Type: IgG
Reactivity: CSFV
Molecular Weight: Theoretical: 42 kDa. Actual: 32 kDa.
Purification: Protein A purified

Applications

Sample:
Lane 1: Recombinant CSFV E2 protein (200ng)
Verified Activity: Primary: Anti-CSFV E2 (TMAB-00487) at 1/1000 dilution
Secondary: IRDye800CW Goat Anti-Rabbit IgG at 1/20000 dilution
Predicted band size: 42 kDa
Observed band size: 32 kDa



Application: ELISA, WB
Recommended ELISA=1:5000-10000; WB=1:500-2000

Properties

Stability & Storage: Store at -20°C or -80°C for 12 months. Avoid repeated freeze-thaw cycles.
Shipping: Shipping with blue ice.

Antigen Details

Immunogen: KLH conjugated synthetic peptide: CSFV Envelope glycoprotein E2
Envelope glycoprotein E2; CSFV E2 protein; structural protein E2 [Classical swine fever virus];
Synonyms: CSFV E2; polyprotein; polyprotein [Classical swine fever virus]; Classical swine fever virus
Envelope glycoprotein E2; CSFV polyprotein E2; Classical swine fever virus E2; CSFV Envelope glycoprotein E2; CSFV Polyprotein

Research Background

Classical swine fever (CSF) is a kind of acute and intense contagious disease in swine, it material damages swine industry. CSF could cause swine appearing disseminated hemorrhage in systemic organ and tissue, degeneration and necrosis in small vascular and capillary endothelial cells. Classical swine fever virus (CSFV) belongs to genera Pestivirus, family Flaviviridae, it's genome total length is 12.3Kb, including a big ORF, encoding 11 structural and nonstructural proteins.

Inhibitor · Natural Compounds · Compound Libraries · Recombinant Proteins

This product is for Research Use Only · Not for Human or Veterinary or Therapeutic Use

Tel:781-999-4286 E_mail:info@targetmol.com Address:34 Washington Street,Wellesley Hills,MA 02481