

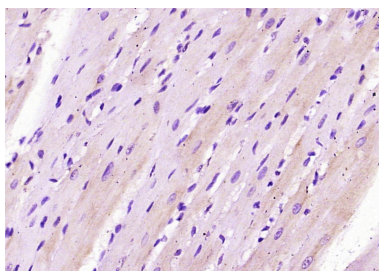
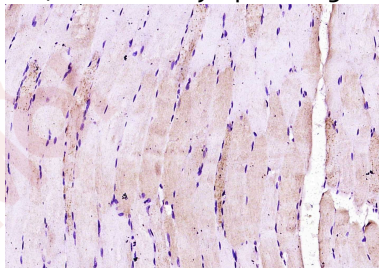
Anti-CRLF1 Polyclonal Antibody

Product Details

Ig Type:	IgG
Reactivity:	Rat (predicted:Human,Mouse,Chicken,Dog,Pig,Cow,Sheep)
Molecular Weight:	Theoretical: 43 kDa.
Purification:	Protein A purified

Applications

- Verified Activity:
1. Paraformaldehyde-fixed, paraffin embedded (rat skeletal muscle); Antigen retrieval by boiling in sodium citrate buffer (pH6.0) for 15 min; Block endogenous peroxidase by 3% hydrogen peroxide for 20 min; Blocking buffer (normal goat serum) at 37°C for 30 min; Antibody incubation with (CRLF1) Polyclonal Antibody, Unconjugated (TMAB-00483) at 1:400 overnight at 4°C, followed by operating according to SP Kit (Rabbit) instructions and DAB staining.
 2. Paraformaldehyde-fixed, paraffin embedded (rat heart tissue); Antigen retrieval by boiling in sodium citrate buffer (pH6.0) for 15 min; Block endogenous peroxidase by 3% hydrogen peroxide for 20 min; Blocking buffer (normal goat serum) at 37°C for 30 min; Antibody incubation with (CRLF1) Polyclonal Antibody, Unconjugated (TMAB-00483) at 1:400 overnight at 4°C, followed by operating according to SP Kit (Rabbit) instructions and DAB staining.



Application:	IF,IHC-Fr,IHC-P
Recommended	IHC-P: 1:100-500; IHC-Fr: 1:100-500; IF: 1:100-500

Properties

Stability & Storage: Store at -20°C or -80°C for 12 months. Avoid repeated freeze-thaw cycles.

Shipping: Shipping with blue ice.

Antigen Details

Immunogen: KLH conjugated synthetic peptide: human CRLF1

Antigen Species: Human

Gene ID: 9244

Uniprot ID: O75462

Synonyms: CRLF1;Cytokine receptor-like factor 1;ZcytoR5;Cytokine-like factor 1 (CLF-1)

Biology Area: Cytokines

Research Background

CRLF1 is a 422 amino acid secreted protein that interacts with cells expressing ciliary neurotrophic factor receptors. A cytokine receptor subunit belonging to the type I cytokine receptor family and type 3 subfamily, CRLF1 is thought to play a role in fetal nervous system development and immunity. CRLF1 is highly expressed in stomach, placenta, heart, ovary, thyroid, bone marrow, appendix, lymph node, spleen, thymus and fetal lung, and promotes neuronal cell survival. CRLF3 is a 442 amino acid protein that contains one fibronectin type-III domain. CRLF3 is expressed in lesion actinic keratosis (AK) and skin and squamous cell carcinoma (SCC), and is thought to negatively regulate the G0/G1 phase of the cell cycle.

Inhibitor · Natural Compounds · Compound Libraries · Recombinant Proteins

This product is for Research Use Only · Not for Human or Veterinary or Therapeutic Use

Tel:781-999-4286 E_mail:info@targetmol.com Address:34 Washington Street,Wellesley Hills,MA 02481