

Anti-CRHR1 Polyclonal Antibody

Product Details

Ig Type: IgG
Reactivity: Mouse,Rat (predicted:Human)
Molecular Weight: Theoretical: 48 kDa. Actual: 48 kDa.
Purification: Protein A purified

Applications

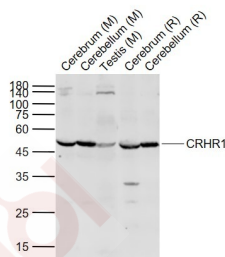
1. Sample:
 Lane 1: Cerebrum (Mouse) Lysate at 40 µg
 Lane 2: Cerebellum (Mouse) Lysate at 40 µg
 Lane 3: Testis (Mouse) Lysate at 40 µg
 Lane 4: Cerebrum (Rat) Lysate at 40 µg
 Lane 5: Cerebellum (Rat) Lysate at 40 µg
Primary: Anti-CRHR1 (TMAB-00481) at 1/1000 dilution
Secondary: IRDye800CW Goat Anti-Rabbit IgG at 1/20000 dilution
Predicted band size: 50-55 kDa
Observed band size: 48 kDa

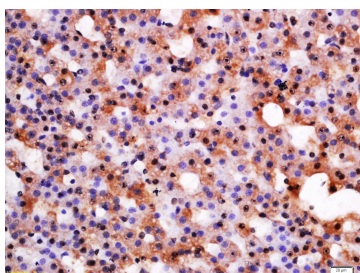
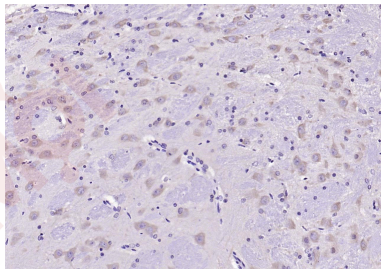
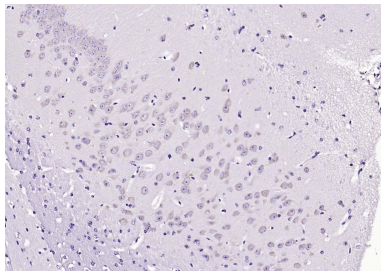
2. Paraformaldehyde-fixed, paraffin embedded (mouse brain); Antigen retrieval by boiling in sodium citrate buffer (pH6.0) for 15 min; Block endogenous peroxidase by 3% hydrogen peroxide for 20 min; Blocking buffer (normal goat serum) at 37°C for 30 min; Antibody incubation with (CRHR1) Polyclonal Antibody, Unconjugated (TMAB-00481) at 1:200 overnight at 4°C, followed by operating according to SP Kit (Rabbit) instructions and DAB staining.

3. Paraformaldehyde-fixed, paraffin embedded (rat brain); Antigen retrieval by boiling in sodium citrate buffer (pH6.0) for 15 min; Block endogenous peroxidase by 3% hydrogen peroxide for 20 min; Blocking buffer (normal goat serum) at 37°C for 30 min; Antibody incubation with (CRHR1) Polyclonal Antibody, Unconjugated (TMAB-00481) at 1:200 overnight at 4°C, followed by operating according to SP Kit (Rabbit) instructions and DAB staining.

4. Tissue/cell: Rat adrenal gland; 4% Paraformaldehyde-fixed and paraffin-embedded; Antigen retrieval: citrate buffer (0.01M, pH6.0), Boiling bathing for 15 min; Block endogenous peroxidase by 3% Hydrogen peroxide for 30 min; Blocking buffer (normal goat serum) at 37°C for 20 min; Incubation: Anti-CRHR1 Polyclonal Antibody, Unconjugated (TMAB-00481) 1:500, overnight at 4°C, followed by conjugation to the secondary antibody and DAb staining.

Verified Activity:





Application: IF,IHC-Fr,IHC-P,WB

Recommended WB: 1:500-2000; IHC-P: 1:100-500; IHC-Fr: 1:100-500; IF: 1:100-500

Properties

Stability & Storage: Store at -20°C or -80°C for 12 months. Avoid repeated freeze-thaw cycles.

Shipping: Shipping with blue ice.

Antigen Details

Immunogen: KLH conjugated synthetic peptide: human CRHR1

Antigen Species: Human

Gene ID: 1394

Uniprot ID: P34998

Synonyms: CRF-R1;CRF 1;Corticotropin releasing hormone receptor variant 1h;MGC124240;CRHR1L;CRH R1h;CRHR;CRH-R1h;MGC124237;Releasing hormone receptor 1;CRHR1f;CRF-R;Seven transmembrane helix receptor;CRH-R1;CRF-R-1;CRF-R1;CRHR 1;corticotropin releasing hormone receptor 1;CRH-R-1;CRF R;CRF1;CRFR1

Biology Area: Cancer,Obesity,Hypothalamic pituitary adrenal axis,Metabolism,Corticoid

Research Background

This gene encodes a G-protein coupled receptor that binds neuropeptides of the corticotropin releasing hormone family that are major regulators of the hypothalamic-pituitary-adrenal pathway. The encoded protein is essential for the activation of signal transduction pathways that regulate diverse physiological processes including stress, reproduction, immune response and obesity. Alternative splicing results in multiple transcript variants one of which is a non-coding read-through transcript with the neighboring gene MGC57346.

Inhibitor · Natural Compounds · Compound Libraries · Recombinant Proteins

This product is for Research Use Only · Not for Human or Veterinary or Therapeutic Use

Tel:781-999-4286 E_mail:info@targetmol.com Address:34 Washington Street,Wellesley Hills,MA 02481